

For Research Use Only

# golgin 97 Monoclonal antibody, PBS Only (Detector)

Catalog Number: 68648-1-PBS



## Basic Information

Catalog Number:

68648-1-PBS

Size:

1 mg/ml

Source:

Mouse

Isotype:

IgG2a

Immunogen Catalog Number:

AG33790

GenBank Accession Number:

BC032853

GeneID (NCBI):

2800

UNIPROT ID:

Q92805

Full Name:

golgi autoantigen, golgin subfamily a, 1

Calculated MW:

767 aa, 88 kDa

Observed MW:

97 kDa

Purification Method:

Protein A purification

CloneNo.:

2A5E4

## Applications

Tested Applications:

WB, IF/ICC, Cytometric bead array, Indirect ELISA

Species Specificity:

human

## Background Information

Golgin subfamily A member 1 is a protein that in humans is encoded by the GOLGA1 gene. GOLGA1 has been shown to interact with ARL1. GOLGA1 is associated with Sjogren's syndrome. The MW of this protein is 97 kDa. IF result shows strong Golgi staining.

## Storage

Storage:

Store at -80°C.

The product is shipped with ice packs. Upon receipt, store it immediately at -80°C

Storage Buffer:

PBS Only

For technical support and original validation data for this product please contact:

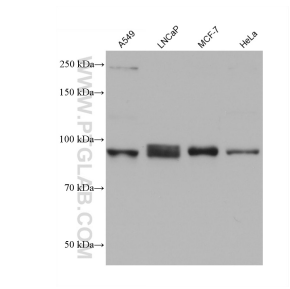
T: 4006900926

E: [Proteintech-CN@ptglab.com](mailto:Proteintech-CN@ptglab.com)

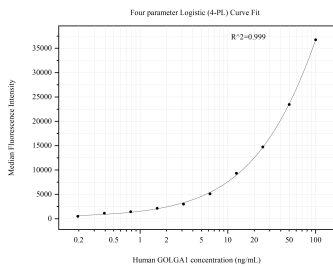
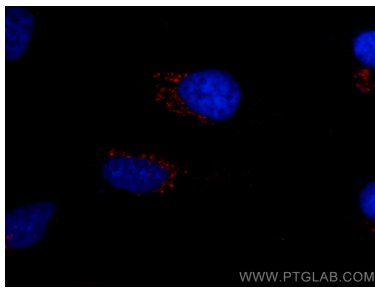
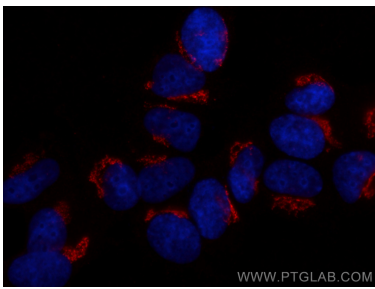
W: [ptgcn.com](http://ptgcn.com)

This product is exclusively available under Proteintech Group brand and is not available to purchase from any other manufacturer.

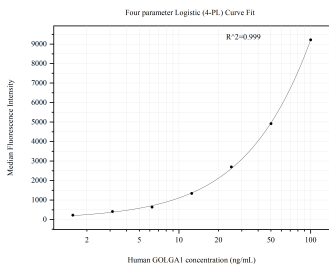
Selected Validation Data



Various lysates were subjected to SDS PAGE followed by western blot with 68648-1-Ig (golgin 97 antibody) at dilution of 1:5000 incubated at room temperature for 1.5 hours. This data was developed using the same antibody clone with 68648-1-PBS in a different storage buffer formulation.



Cytometric bead array standard curve of MP50871-1, GOLGA1 Monoclonal Matched Antibody Pair, PBS Only. Capture antibody: 68648-2-PBS. Detection antibody: 68648-1-PBS. Standard: Ag33790. Range: 0.195-100 ng/mL.



Cytometric bead array standard curve of MP50871-3, GOLGA1 Monoclonal Matched Antibody Pair, PBS Only. Capture antibody: 68648-3-PBS. Detection antibody: 68648-1-PBS. Standard: Ag33790. Range: 1.563-100 ng/mL.