

For Research Use Only

# SHCBP1 Monoclonal antibody, PBS Only

Catalog Number: 68647-1-PBS



## Basic Information

Catalog Number: 68647-1-PBS	GenBank Accession Number: BC030699	Purification Method: Protein G purification
Size: 1mg/ml	GeneID (NCBI): 79801	CloneNo.: 1B2E12
Source: Mouse	UNIPROT ID: Q8NEM2	
Isotype: IgG1	Full Name: SHC SH2-domain binding protein 1	
Immunogen Catalog Number: AG17517	Calculated MW: 672 aa, 76 kDa	
	Observed MW: 76 kDa	

## Applications

**Tested Applications:**  
WB, IHC, IF/ICC, Indirect ELISA

**Species Specificity:**  
human, mouse, rat

## Background Information

SHCBP1 was initially identified as a potential gene associated with cell proliferation in fibroblasts. SHCBP1 exerts a crucial physiological function in normal tissue development. Chen et al. showed that SHCBP1 is an essential component of FGF signaling in neural progenitor cells. SHCBP1 is also upregulated during T cell proliferation and regulates CD4+ T cell effector function in vivo. Recently, SHCBP1 was shown to be closely associated with cancer development.

## Storage

**Storage:**  
Store at -80°C.

**The product is shipped with ice packs. Upon receipt, store it immediately at -80°C**

**Storage Buffer:**  
PBS Only

For technical support and original validation data for this product please contact:

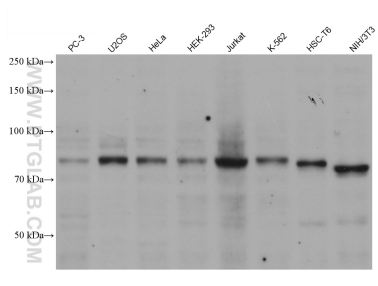
T: 4006900926

E: [Proteintech-CN@ptglab.com](mailto:Proteintech-CN@ptglab.com)

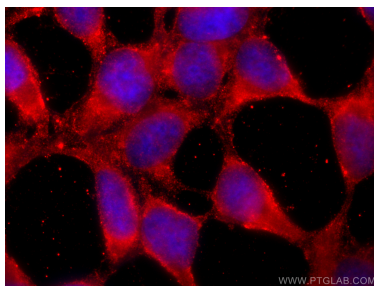
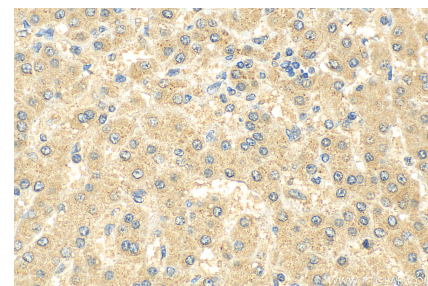
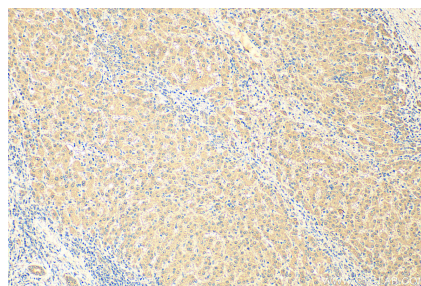
W: [ptgcn.com](http://ptgcn.com)

**This product is exclusively available under Proteintech Group brand and is not available to purchase from any other manufacturer.**

## Selected Validation Data



Various lysates were subjected to SDS PAGE followed by western blot with 68647-1-Ig (SHCBP1 antibody) at dilution of 1:5000 incubated at room temperature for 1.5 hours. This data was developed using the same antibody clone with 68647-1-PBS in a different storage buffer formulation.



Immunofluorescent analysis of (-20°C Ethanol) fixed HEK-293 cells using SHCBP1 antibody (68647-1-Ig, Clone: 1B2E12 ) at dilution of 1:800 and CoraLite®488-Conjugated AffiniPure Goat Anti-Mouse IgG(H+L) (SA00013-1). This data was developed using the same antibody clone with 68647-1-PBS in a different storage buffer formulation.