

For Research Use Only

SHCBP1 Monoclonal antibody

Catalog Number: 68647-1-Ig



Basic Information

Catalog Number: 68647-1-Ig	GenBank Accession Number: BC030699	Purification Method: Protein G purification
Size: 1000 ug/ml	GeneID (NCBI): 79801	CloneNo.: 1B2E12
Source: Mouse	UNIPROT ID: Q8NEM2	Recommended Dilutions: WB 1:2000-1:10000 IHC 1:200-1:800 IF/ICC 1:400-1:1600
Isotype: IgG1	Full Name: SHC SH2-domain binding protein 1	
Immunogen Catalog Number: AG17517	Calculated MW: 672 aa, 76 kDa Observed MW: 76 kDa	

Applications

Tested Applications:
WB, IHC, IF/ICC, ELISA

Species Specificity:
human, mouse, rat

Note-IHC: suggested antigen retrieval with TE buffer pH 9.0; (*) Alternatively, antigen retrieval may be performed with citrate buffer pH 6.0

Positive Controls:

WB : PC-3 cells, U2OS cells, HeLa cells, HEK-293 cells, Jurkat cells, K-562 cells, HSC-T6 cells, NIH/3T3 cells

IHC : human liver cancer tissue, human breast cancer tissue

IF/ICC : HEK-293 cells,

Background Information

SHCBP1 was initially identified as a potential gene associated with cell proliferation in fibroblasts. SHCBP1 exerts a crucial physiological function in normal tissue development. Chen et al. showed that SHCBP1 is an essential component of FGF signaling in neural progenitor cells. SHCBP1 is also upregulated during T cell proliferation and regulates CD4⁺ T cell effector function in vivo. Recently, SHCBP1 was shown to be closely associated with cancer development.

Storage

Storage:

Store at -20°C. Stable for one year after shipment.

Storage Buffer:

PBS with 0.02% sodium azide and 50% glycerol pH 7.3.

Aliquoting is unnecessary for -20°C storage

For technical support and original validation data for this product please contact:

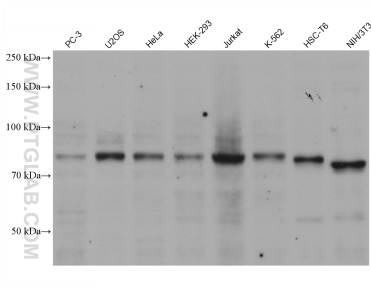
T: 4006900926

E: Proteintech-CN@ptglab.com

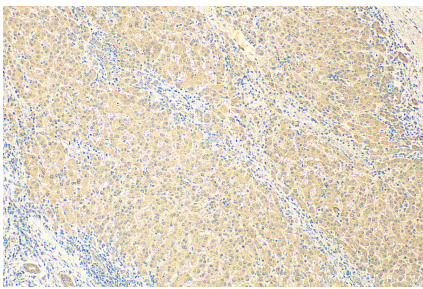
W: ptgcn.com

This product is exclusively available under Proteintech Group brand and is not available to purchase from any other manufacturer.

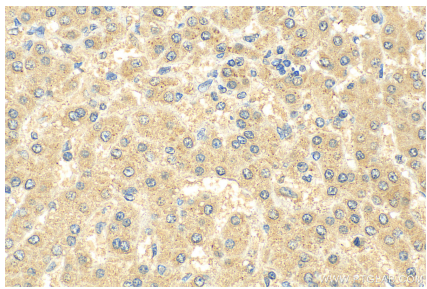
Selected Validation Data



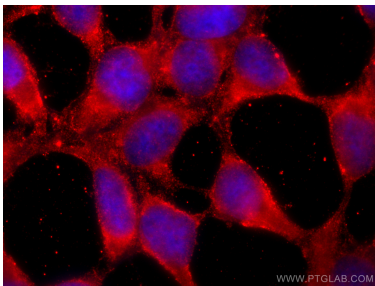
Various lysates were subjected to SDS PAGE followed by western blot with 68647-1-Ig (SHCBP1 antibody) at dilution of 1:5000 incubated at room temperature for 1.5 hours.



Immunohistochemical analysis of paraffin-embedded human liver cancer tissue slide using 68647-1-Ig (SHCBP1 antibody) at dilution of 1:400 (under 10x lens). Heat mediated antigen retrieval with Tris-EDTA buffer (pH 9.0).



Immunohistochemical analysis of paraffin-embedded human liver cancer tissue slide using 68647-1-Ig (SHCBP1 antibody) at dilution of 1:400 (under 40x lens). Heat mediated antigen retrieval with Tris-EDTA buffer (pH 9.0).



Immunofluorescent analysis of (-20°C Ethanol) fixed HEK-293 cells using SHCBP1 antibody (68647-1-Ig, Clone: 1B2E12) at dilution of 1:800 and CoraLite®488-Conjugated AffiniPure Goat Anti-Mouse IgG(H+L) (SA00013-1).