

For Research Use Only

EGFR Monoclonal antibody, PBS Only (Detector)

Catalog Number: 68643-2-PBS



Basic Information

Catalog Number:

68643-2-PBS

Concentration:

1000 ug/ml

Source:

Mouse

Isotype:

IgG1

Immunogen Catalog Number:

AG24947

GenBank Accession Number:

NM_005228.5

GeneID (NCBI):

1956

UNIPROT ID:

P00533

Full Name:

epidermal growth factor receptor
(erythroblastic leukemia viral (v-erb-
b) oncogene homolog, avian)

Calculated MW:

134kd

Purification Method:

Protein G purification

CloneNo.:

2D8G2

Applications

Tested Applications:

Sandwich ELISA, Indirect ELISA, Sample test

Species Specificity:

human

Background Information

Storage

Storage:

Store at -80°C.

The product is shipped with ice packs. Upon receipt, store it immediately at -80°C

Storage Buffer:

PBS only, pH7.3

For technical support and original validation data for this product please contact:

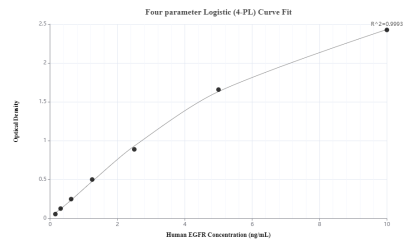
T: 4006900926

E: Proteintech-CN@ptglab.com

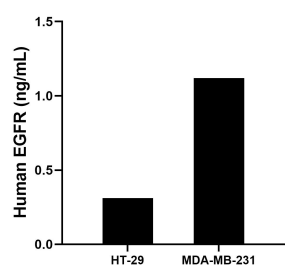
W: ptgcn.com

This product is exclusively available under Proteintech Group brand and is not available to purchase from any other manufacturer.

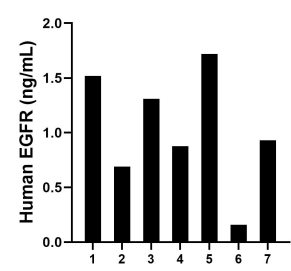
Selected Validation Data



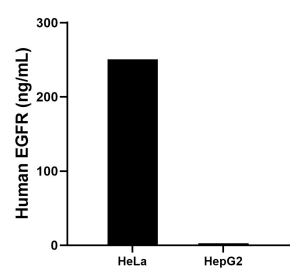
Sandwich ELISA standard curve of MP50069-1, EGFR Monoclonal Matched Antibody Pair, PBS Only. Capture antibody: 68643-1-PBS. Detection antibody: 68643-2-PBS. Standard: Eg0204. Range: 0.156-10 ng/mL



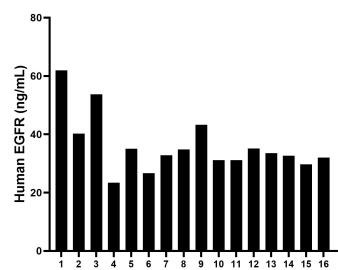
HT-29 and MDA-MB-231 were cultured in RPMI-1640 supplemented with 10% fetal bovine serum, 100 U/mL penicillin and 100 µg/mL streptomycin sulfate. An aliquot of the culture supernates were removed, assayed for human IDO 1, and measured 0.31 ng/mL and 1.12 ng/mL



Human milk of seven individual healthy human donors was measured. The human EGFR concentration of detected samples was determined to be 1.03 ng/mL with a range of 0.16 - 1.72 ng/mL



The mean EGFR concentration was determined to be 250.71 ng/mL in HeLa cell extract based on a 4.4 mg/mL extract load and 2.64 ng/mL in HepG2 cell extract based on a 4.1 mg/mL extract load.



Serum of sixteen individual healthy human donors was measured. The human EGFR concentration of detected samples was determined to be 36.08 ng/mL with a range of 23.43 - 61.95 ng/mL