

For Research Use Only

# COG1 Monoclonal antibody, PBS Only (Capture)

Catalog Number: 68642-1-PBS



## Basic Information

Catalog Number: 68642-1-PBS	GenBank Accession Number: BC021985	Purification Method: Protein G purification
Concentration: 1mg/ml	GeneID (NCBI): 9382	CloneNo.: 2D8D11
Source: Mouse	UNIPROT ID: Q8WTW3	
Isotype: IgG1	Full Name: component of oligomeric golgi complex 1	
Immunogen Catalog Number: AG33924	Calculated MW: 109 kDa	
	Observed MW: 100-109 kDa	

## Applications

**Tested Applications:**  
WB, IF/ICC, Cytometric bead array, Indirect ELISA

**Species Specificity:**  
human, rabbit

## Background Information

COG1 is one protein of the COG complex which is a heterooctameric complex that regulates intraGolgi trafficking and the integrity of the Golgi compartment in eukaryotic cells. It is reported that this protein is required for steps in the normal medial and trans-Golgi-associated processing of glycoconjugates and plays a role in the organization of the Golgi-localized complex. COG1 has a calculated molecular weight of 109 kDa and western blot analysis detected COG1 at 100-109 kDa (PMID: 16537452).

## Storage

**Storage:**  
Store at -80°C.  
**The product is shipped with ice packs. Upon receipt, store it immediately at -80°C**

**Storage Buffer:**  
PBS Only

For technical support and original validation data for this product please contact:

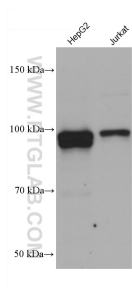
T: 4006900926

E: [Proteintech-CN@ptglab.com](mailto:Proteintech-CN@ptglab.com)

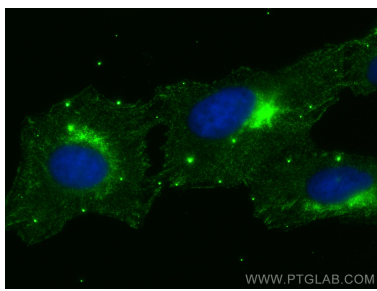
W: [ptgcn.com](http://ptgcn.com)

**This product is exclusively available under Proteintech Group brand and is not available to purchase from any other manufacturer.**

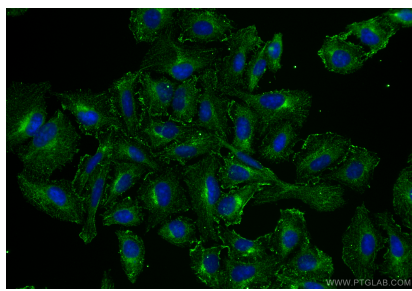
Selected Validation Data



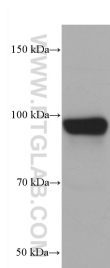
Various lysates were subjected to SDS PAGE followed by western blot with 68642-1-Ig (COG1 antibody) at dilution of 1:5000 incubated at room temperature for 1.5 hours. This data was developed using the same antibody clone with 68642-1-PBS in a different storage buffer formulation.



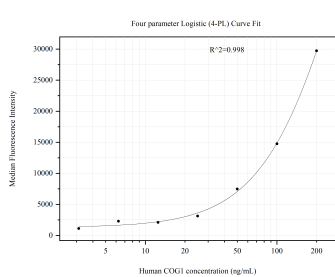
Immunofluorescent analysis of (-20°C Methanol) fixed U2OS cells using COG1 antibody (68642-1-Ig, Clone: 2D8D11 ) at dilution of 1:1000 and CoraLite®488-Conjugated AffiniPure Goat Anti-Mouse IgG(H+L) (SA00013-1). This data was developed using the same antibody clone with 68642-1-PBS in a different storage buffer formulation.



Immunofluorescent analysis of (-20°C Ethanol) fixed U2OS cells using COG1 antibody (68642-1-Ig, Clone: 2D8D11 ) at dilution of 1:1500 and CoraLite®488-Conjugated Goat Anti-Mouse IgG(H+L) (SA00013-1). This data was developed using the same antibody clone with 68642-1-PBS in a different storage buffer formulation.



LNCaP cells were subjected to SDS PAGE followed by western blot with 68642-1-Ig (COG1 antibody) at dilution of 1:5000 incubated at room temperature for 1.5 hours. This data was developed using the same antibody clone with 68642-1-PBS in a different storage buffer formulation.



Cytometric bead array standard curve of MP51262-1, COG1 Monoclonal Matched Antibody Pair, PBS Only. Capture antibody: 68642-1-PBS. Detection antibody: 68642-2-PBS. Standard:Ag33924. Range: 3.125-200 ng/mL.