

PTPRH Monoclonal antibody, PBS Only

Catalog Number: 68635-1-PBS

Basic Information

Catalog Number:

68635-1-PBS

Size:

1mg/ml

Source:

Mouse

Isotype:

IgG1

Immunogen Catalog Number:

AG17351

GenBank Accession Number:

BC111716

GeneID (NCBI):

5794

UNIPROT ID:

Q9HD43

Full Name:

protein tyrosine phosphatase,
receptor type, H

Calculated MW:

1115 aa, 122 kDa

Observed MW:

200-210 kDa

Purification Method:

Protein G purification

CloneNo.:

3C6E8

Applications

Tested Applications:

WB, Indirect ELISA

Species Specificity:

human, pig

Background Information

PTPRH, also known as SAP-1 (Stomach Cancer-Associated Protein-Tyrosine Phosphatase-1), is a member of the protein tyrosine phosphatase (PTP) family. These enzymes regulate cellular signaling by dephosphorylating tyrosine residues on proteins, counterbalancing kinase activity (PMID: 11278335). PTPRH is classified as a receptor-type PTP, characterized by an extracellular domain, a transmembrane region, and intracellular catalytic domains. In colorectal, gastric, and hepatocellular cancers, PTPRH is often upregulated and linked to poor prognosis (PMID: 12101188). Paradoxically, it may suppress tumorigenesis in other contexts by stabilizing cell adhesion. Overexpression in certain cancers suggests utility as a diagnostic or prognostic marker. The molecular weight of PTPRH is 122 kDa, it is reported that it can form a dimer with a molecular weight of 210 kDa (PMID:15850787).

Storage

Storage:

Store at -80°C.

The product is shipped with ice packs. Upon receipt, store it immediately at -80°C

Storage Buffer:

PBS Only

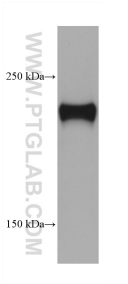
For technical support and original validation data for this product please contact:

T: 4006900926

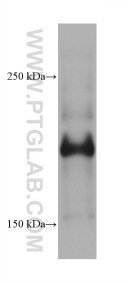
E: Proteintech-CN@ptglab.comW: ptgcn.com

This product is exclusively available under Proteintech Group brand and is not available to purchase from any other manufacturer.

Selected Validation Data



pig spleen tissue were subjected to SDS PAGE followed by western blot with 68635-1-Ig (PTPRH antibody) at dilution of 1:20000 incubated at room temperature for 1.5 hours. This data was developed using the same antibody clone with 68635-1-PBS in a different storage buffer formulation.



A431 cells were subjected to SDS PAGE followed by western blot with 68635-1-Ig (PTPRH antibody) at dilution of 1:20000 incubated at room temperature for 1.5 hours. This data was developed using the same antibody clone with 68635-1-PBS in a different storage buffer formulation.