

PTPRH Monoclonal antibody

Catalog Number: 68635-1-Ig

Basic Information

Catalog Number:

68635-1-Ig

Size:

1000 ug/ml

Source:

Mouse

Isotype:

IgG1

Immunogen Catalog Number:

AG17351

GenBank Accession Number:

BC111716

GeneID (NCBI):

5794

UNIPROT ID:

Q9HD43

Full Name:

protein tyrosine phosphatase,
receptor type, H

Calculated MW:

1115 aa, 122 kDa

Observed MW:

200-210 kDa

Purification Method:

Protein G purification

CloneNo.:

3C6E8

Recommended Dilutions:

WB 1:5000-1:50000

Applications

Tested Applications:

WB, ELISA

Species Specificity:

human, pig

Positive Controls:

WB : pig spleen tissue, A431 cells

Background Information

PTPRH, also known as SAP-1 (Stomach Cancer-Associated Protein-Tyrosine Phosphatase-1), is a member of the protein tyrosine phosphatase (PTP) family. These enzymes regulate cellular signaling by dephosphorylating tyrosine residues on proteins, counterbalancing kinase activity (PMID: 11278335). PTPRH is classified as a receptor-type PTP, characterized by an extracellular domain, a transmembrane region, and intracellular catalytic domains. In colorectal, gastric, and hepatocellular cancers, PTPRH is often upregulated and linked to poor prognosis (PMID: 12101188). Paradoxically, it may suppress tumorigenesis in other contexts by stabilizing cell adhesion. Overexpression in certain cancers suggests utility as a diagnostic or prognostic marker. The molecular weight of PTPRH is 122 kDa, it is reported that it can form a dimer with a molecular weight of 210 kDa (PMID:15850787).

Storage

Storage:

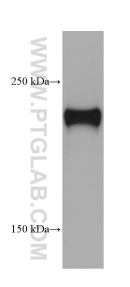
Store at -20°C. Stable for one year after shipment.

Storage Buffer:

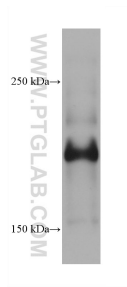
PBS with 0.02% sodium azide and 50% glycerol pH 7.3.

Aliquoting is unnecessary for -20°C storage

Selected Validation Data



pig spleen tissue were subjected to SDS PAGE followed by western blot with 68635-1-Ig (PTPRH antibody) at dilution of 1:20000 incubated at room temperature for 1.5 hours.



A431 cells were subjected to SDS PAGE followed by western blot with 68635-1-Ig (PTPRH antibody) at dilution of 1:20000 incubated at room temperature for 1.5 hours.