

STAM Monoclonal antibody

Catalog Number: 68628-1-Ig

Basic Information

Catalog Number:

68628-1-Ig

Size:

1000 µg/ml

Source:

Mouse

Isotype:

IgG2b

Immunogen Catalog Number:

AG33192

GenBank Accession Number:

BC030586

GeneID (NCBI):

8027

UNIPROT ID:

Q92783

Full Name:signal transducing adaptor molecule
(SH3 domain and ITAM motif) 1**Calculated MW:**

59 kDa

Observed MW:

70 kDa

Purification Method:

Protein A purification

CloneNo.:

1F5C2

Recommended Dilutions:

WB 1:5000-1:50000

Applications

Tested Applications:

WB, ELISA

Species Specificity:

Human, mouse, rat

Positive Controls:

WB : HCT 116 cells, RAW 264.7 cells, HeLa cells, LNCaP cells, HepG2 cells, Jurkat cells, K-562 cells

Background Information

STAM, also named as STAM1, belongs to the STAM family. It is involved in intracellular signal transduction mediated by cytokines and growth factors. Upon IL-2 and GM-CSF stimulation, it plays a role in signaling leading to DNA synthesis and MYC induction. STAM may also play a role in T-cell development. It is involved in down-regulation of receptor tyrosine kinase via multivesicular body (MVBs). Together with HRS, STAM forms ESCRT-0. STAM was originally identified as an adaptor protein involved in cytokine signaling.(PMID:20505072)

Storage

Storage:

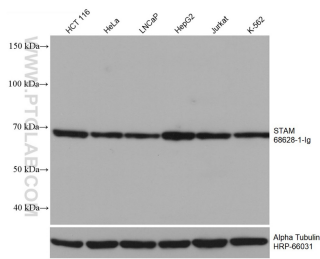
Store at -20°C. Stable for one year after shipment.

Storage Buffer:

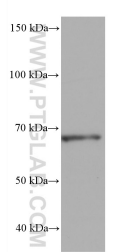
PBS with 0.02% sodium azide and 50% glycerol pH 7.3.

Aliquoting is unnecessary for -20°C storage

Selected Validation Data



Various lysates were subjected to SDS PAGE followed by western blot with 68628-1-Ig (STAM antibody) at dilution of 1:10000 incubated at room temperature for 1.5 hours. The membrane was stripped and reblotted with HRP-conjugated Alpha Tubulin Monoclonal antibody (HRP-66031) as loading control.



RAW 264.7 cells were subjected to SDS PAGE followed by western blot with 68628-1-Ig (STAM antibody) at dilution of 1:10000 incubated at room temperature for 1.5 hours.