

# PPM1F Monoclonal antibody

Catalog Number: 68626-1-Ig

## Basic Information

**Catalog Number:**

68626-1-Ig

**Size:**

1000 µg/ml

**Source:**

Mouse

**Isotype:**

IgG2a

**Immunogen Catalog Number:**

AG10316

**GenBank Accession Number:**

BC071989

**GeneID (NCBI):**

9647

**UNIPROT ID:**

P49593

**Full Name:**

protein phosphatase 1F (PP2C domain containing)

**Calculated MW:**

453 aa, 50 kDa

**Observed MW:**

50 kDa

**Purification Method:**

Protein A purification

**CloneNo.:**

2A2E8

**Recommended Dilutions:**

WB 1:5000-1:50000

## Applications

**Tested Applications:**

WB, ELISA

**Species Specificity:**

Human

**Positive Controls:**

**WB :** U2OS cells, A375 cells, HEK-293 cells, HepG2 cells, Jurkat cells, K-562 cells, human peripheral blood platelets

## Background Information

Mg<sup>2+</sup>/Mn<sup>2+</sup>-dependent protein phosphatase 1F (PPM1F) belongs to the PP2C family of Ser/Thr protein phosphatases and is the critical enzyme responsible for dephosphorylating the threonine motif. PPM1F is ubiquitous in various tissues and organs (PMID: 26498692). High expression of PPM1F was positively associated with poor survival and tumor recurrence in patients with cancers and PPM1F might be a potential biomarker in HCC patients (PMID: 30470261).

## Storage

**Storage:**

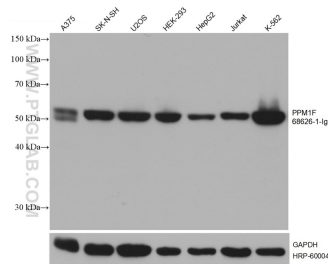
Store at -20°C. Stable for one year after shipment.

**Storage Buffer:**

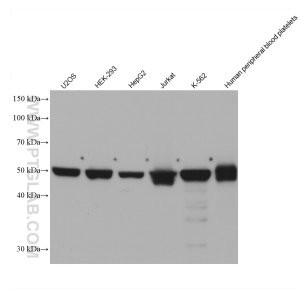
PBS with 0.02% sodium azide and 50% glycerol pH 7.3.

Aliquoting is unnecessary for -20°C storage

## Selected Validation Data



Various lysates were subjected to SDS PAGE followed by western blot with 68626-1-Ig (PPM1F antibody) at dilution of 1:20000 incubated at room temperature for 1.5 hours. The membrane was stripped and reblotted with HRP-conjugated GAPDH Monoclonal antibody (HRP-60004) as loading control.



Various lysates were subjected to SDS PAGE followed by western blot with 68626-1-Ig (PPM1F antibody) at dilution of 1:10000 incubated at room temperature for 1.5 hours.