

SPIN1 Monoclonal antibody, PBS Only

Catalog Number: 68615-1-PBS

Basic Information

Catalog Number:	68615-1-PBS	GenBank Accession Number:	BC013571	Purification Method:	Protein G purification
Size:	1 mg/ml	GeneID (NCBI):	10927	CloneNo.:	1G8C5
Source:	Mouse	UNIPROT ID:	Q9Y657		
Isotype:	IgG1	Full Name:	spindlin 1		
Immunogen Catalog Number:	AG33686	Calculated MW:	262 aa, 30 kDa		
		Observed MW:	30 kDa		

Applications

Tested Applications:
WB, Indirect ELISA

Species Specificity:
Human, mouse, rat, rabbit

Background Information

SPIN1 (Spindlin 1) is a histone methylation reader, which recognizes trimethylated histone H3 lysine 4 through the protein-protein interaction. SPIN1 was initially found in ovarian cancer via searching ovarian cancer-related genes. It is overexpressed in ovarian cancer tissue, which exhibits a high homology to mouse Spin (Spindlin) gene. Signaling pathways responsible for SPIN1 functions include PI3K/Akt, Wnt and RET that are highly relevant to tumorigenesis. (PMID: 34492335, PMID: 31790762)

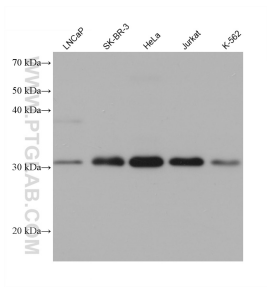
Storage

Storage:
Store at -80°C.

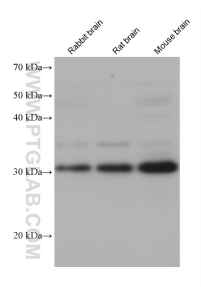
The product is shipped with ice packs. Upon receipt, store it immediately at -80°C

Storage Buffer:
PBS Only

Selected Validation Data



Various lysates were subjected to SDS PAGE followed by western blot with 68615-1-Ig (SPIN1 antibody) at dilution of 1:20000 incubated at room temperature for 1.5 hours. This data was developed using the same antibody clone with 68615-1-PBS in a different storage buffer formulation.



Various lysates were subjected to SDS PAGE followed by western blot with 68615-1-Ig (SPIN1 antibody) at dilution of 1:20000 incubated at room temperature for 1.5 hours. This data was developed using the same antibody clone with 68615-1-PBS in a different storage buffer formulation.