

For Research Use Only

# SPIN1 Monoclonal antibody

Catalog Number: 68615-1-Ig



## Basic Information

<b>Catalog Number:</b> 68615-1-Ig	<b>GenBank Accession Number:</b> BC013571	<b>Purification Method:</b> Protein G purification
<b>Size:</b> 1000 µg/ml	<b>GeneID (NCBI):</b> 10927	<b>CloneNo.:</b> 1G8C5
<b>Source:</b> Mouse	<b>UNIPROT ID:</b> Q9Y657	<b>Recommended Dilutions:</b> WB 1:5000-1:50000
<b>Isotype:</b> IgG1	<b>Full Name:</b> spindlin 1	
<b>Immunogen Catalog Number:</b> AG33686	<b>Calculated MW:</b> 262 aa, 30 kDa	
	<b>Observed MW:</b> 30 kDa	

## Applications

**Tested Applications:**  
WB, ELISA

**Species Specificity:**  
Human, mouse, rat, rabbit

**Positive Controls:**  
WB : LNCaP cells, NCCIT cells, rabbit brain tissue, SK-BR-3 cells, HeLa cells, Jurkat cells, K-562 cells, rat brain tissue, mouse brain tissue

## Background Information

SPIN1 (Spindlin 1) is a histone methylation reader, which recognizes trimethylated histone H3 lysine 4 through the protein-protein interaction. SPIN1 was initially found in ovarian cancer via searching ovarian cancer-related genes. It is overexpressed in ovarian cancer tissue, which exhibits a high homology to mouse Spin (Spindlin) gene. Signaling pathways responsible for SPIN1 functions include PI3K/Akt, Wnt and RET that are highly relevant to tumorigenesis. (PMID: 34492335, PMID: 31790762)

## Storage

**Storage:**  
Store at -20°C. Stable for one year after shipment.

**Storage Buffer:**  
PBS with 0.02% sodium azide and 50% glycerol pH 7.3.

Aliquoting is unnecessary for -20°C storage

For technical support and original validation data for this product please contact:

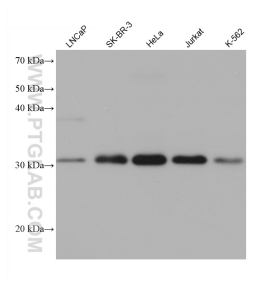
T: 4006900926

E: Proteintech-CN@ptglab.com

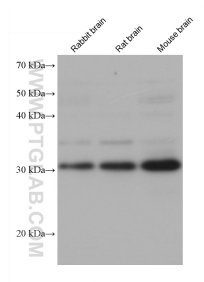
W: ptgcn.com

**This product is exclusively available under Proteintech Group brand and is not available to purchase from any other manufacturer.**

## Selected Validation Data



Various lysates were subjected to SDS PAGE followed by western blot with 68615-1-Ig (SPIN1 antibody) at dilution of 1:20000 incubated at room temperature for 1.5 hours.



Various lysates were subjected to SDS PAGE followed by western blot with 68615-1-Ig (SPIN1 antibody) at dilution of 1:20000 incubated at room temperature for 1.5 hours.