

KANK1 Monoclonal antibody

Catalog Number: 68613-1-Ig

Basic Information

Catalog Number:

68613-1-Ig

Size:

1000 ug/ml

Source:

Mouse

Isotype:

IgG1

Immunogen Catalog Number:

AG31440

GenBank Accession Number:

NM_015158

GeneID (NCBI):

23189

UNIPROT ID:

Q14678

Full Name:

KN motif and ankyrin repeat domains

1

Calculated MW:

147KD

Observed MW:

130-200 kDa

Purification Method:

Protein G purification

CloneNo.:

2D3G8

Recommended Dilutions:

WB 1:5000-1:50000

IF/ICC 1:200-1:800

Applications

Tested Applications:

WB, IF/ICC, FC (Intra), ELISA

Species Specificity:

human

Positive Controls:

WB : A375 cells, PC-3 cells, MCF-7 cells, HeLa cells, HEK-293 cells, HepG2 cells, HuH-7 cells, Daudi cells, Raji cells

IF/ICC : HepG2 cells,

Background Information

KANK1 (KN motif and ankyrin repeat domain-containing protein 1) is involved in the control of cytoskeleton formation by regulating actin polymerization, inhibiting actin fiber formation and cell migration (PMID: 25961457). It inhibits RhoA activity, the formation of lamellipodia but not of filopodia (PMID: 25961457, PMID: 5961457). It also inhibits fibronectin-mediated cell spreading and regulates Rac signaling pathways (PMID: 25961457). Talin-KANK1 interaction controls the recruitment of cortical microtubule stabilizing complexes to focal adhesions (PMID: 27410476). KANK1 can be detected 130-200 kDa (PMID: 15823577, PMID: 33253712, PMID: 35805114).

Storage

Storage:

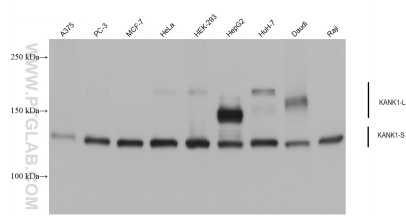
Store at -20°C. Stable for one year after shipment.

Storage Buffer:

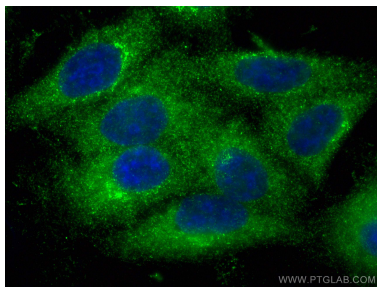
PBS with 0.02% sodium azide and 50% glycerol pH 7.3.

Aliquoting is unnecessary for -20°C storage

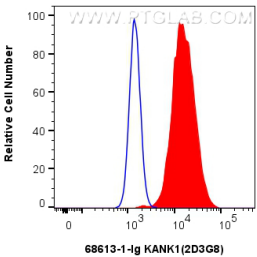
Selected Validation Data



Various lysates were subjected to SDS PAGE followed by western blot with 68613-1-Ig (KANK1 antibody) at dilution of 1:10000 incubated at room temperature for 1.5 hours.



Immunofluorescent analysis of (-20°C Ethanol) fixed HepG2 cells using KANK1 antibody (68613-1-Ig, Clone: 2D3G8) at dilution of 1:400 and CoraLite®488-Conjugated AffiniPure Goat Anti-Mouse IgG(H+L) (SA00013-1).



1x10⁶ HepG2 cells were intracellularly stained with 0.25 ug KANK1 Monoclonal antibody (68613-1-Ig, Clone:2D3G8) and CoraLite®488-Conjugated Goat Anti-Mouse IgG(H+L) (SA00013-1)(red), or 0.25 ug Mouse IgG1 isotype control Mouse McAb (66360-1-Ig, Clone: 1F8D3) (blue). Cells were fixed with 4% PFA and permeabilized with Flow Cytometry Perm Buffer (PF00011-C).