

RAB38 Monoclonal antibody, PBS Only

Catalog Number: 68603-1-PBS

Basic Information

Catalog Number:

68603-1-PBS

Size:

1 mg/ml

Source:

Mouse

Isotype:

IgG2a

Immunogen Catalog Number:

AG26440

GenBank Accession Number:

BC015808

GeneID (NCBI):

23682

UNIPROT ID:

P57729

Full Name:

RAB38, member RAS oncogene family

Calculated MW:

211 aa, 24 kDa

Observed MW:

24 kDa

Purification Method:

Protein A purification

CloneNo.:

3A10C5

Applications

Tested Applications:

WB, Indirect ELISA

Species Specificity:

Human

Background Information

The RAB family of small GTPases is part of the Ras protein superfamily and is primarily responsible for regulating intracellular vesicle transport and migration. RAB38 is a recently identified member of the RAB family of proteins and its expression is tissue-specific. RAB38 is predominantly expressed in melanocytes and melanoma tissues, but not in other normal tissues, serving as a melanocyte differentiation antigen. RAB38 has also been reported to be upregulated in glioblastoma, and high levels of its expression are associated with a poor prognosis and enhanced cell migration.

Storage

Storage:

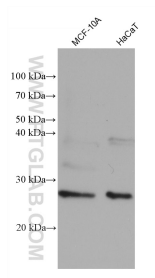
Store at -80°C.

The product is shipped with ice packs. Upon receipt, store it immediately at -80°C

Storage Buffer:

PBS Only

Selected Validation Data



Various lysates were subjected to SDS PAGE followed by western blot with 68603-1-Ig (RAB38 antibody) at dilution of 1:5000 incubated at room temperature for 1.5 hours. This data was developed using the same antibody clone with 68603-1-PBS in a different storage buffer formulation.