

HOMER1 Monoclonal antibody, PBS Only

Catalog Number: 68597-1-PBS

Basic Information

Catalog Number: 68597-1-PBS	GenBank Accession Number: BC015502	Purification Method: Protein G purification
Size: 1mg/ml	GeneID (NCBI): 9456	CloneNo.: 3B1B11
Source: Mouse	UNIPROT ID: Q86YM7	
Isotype: IgG1	Full Name: homer homolog 1 (Drosophila)	
Immunogen Catalog Number: AG21302	Calculated MW: 40 kDa	
	Observed MW: 40-46 kDa	

Applications

Tested Applications:
WB, IF, Indirect ELISA

Species Specificity:
Human, Mouse, Rat, Rabbit, Pig

Background Information

Human HOMER1, also named as SYN47, belongs to the Homer family. Human HOMER1 has some isoforms: HOMER1a, HOMER1b, HOMER1c, HOMER1e and HOMER1h. Mouse Homer1 also named as Vesl-1 and it has some isoforms: Vesl-1l, Vesl-1m, Vesl-1s, Homer1b, and Homer1d. HOMER1 is a postsynaptic density scaffolding protein. It is a neuronal immediate-early gene (IEG) that is enriched at excitatory synapses and binds mGluRs. In WB, the MW of HOMER1 is about 46-50kd, 40-43kd and 20-26kd.

Storage

Storage:
Store at -80°C.

The product is shipped with ice packs. Upon receipt, store it immediately at -80°C

Storage Buffer:
PBS Only

For technical support and original validation data for this product please contact:

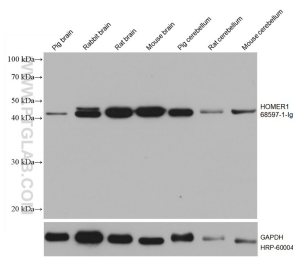
T: 4006900926

E: Proteintech-CN@ptglab.com

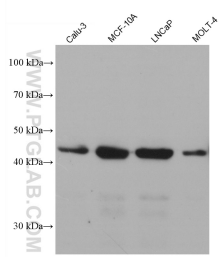
W: ptgcn.com

This product is exclusively available under Proteintech Group brand and is not available to purchase from any other manufacturer.

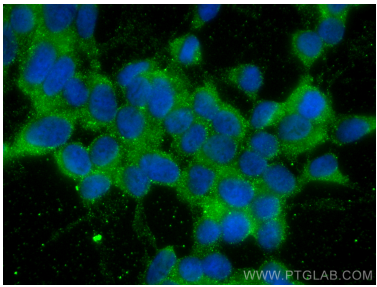
Selected Validation Data



Various lysates were subjected to SDS PAGE followed by western blot with 68597-1-Ig (HOMER1 antibody) at dilution of 1:20000 incubated at room temperature for 1.5 hours. The membrane was stripped and reblotted with HRP-conjugated GAPDH Monoclonal antibody (HRP-60004) as loading control. This data was developed using the same antibody clone with 68597-1-PBS in a different storage buffer formulation.



Various lysates were subjected to SDS PAGE followed by western blot with 68597-1-Ig (HOMER1 antibody) at dilution of 1:20000 incubated at room temperature for 1.5 hours. This data was developed using the same antibody clone with 68597-1-PBS in a different storage buffer formulation.



Immunofluorescent analysis of $(-20^{\circ}\text{C}$ Ethanol) fixed SH-SY5Y cells using HOMER1 antibody (68597-1-Ig, Clone: 3B1B11) at dilution of 1:800 and CoraLite $^{\text{TM}}$ 488-Conjugated AffiniPure Goat Anti-Mouse IgG(H+L). This data was developed using the same antibody clone with 68597-1-PBS in a different storage buffer formulation.