

For Research Use Only

AEG-1/MTDH Monoclonal antibody, PBS Only

Catalog Number: 68592-1-PBS



Basic Information

Catalog Number:

68592-1-PBS

Concentration:

1mg/ml

Source:

Mouse

Isotype:

IgG1

Immunogen Catalog Number:

AG5033

GenBank Accession Number:

BC045642

GeneID (NCBI):

92140

UNIPROT ID:

Q86UE4

Full Name:

metadherin

Calculated MW:

582 aa, 64 kDa

Observed MW:

70-80 kDa

Purification Method:

Protein A purification

CloneNo.:

1D8C2

Applications

Tested Applications:

WB, IHC, IF/ICC, Indirect ELISA

Species Specificity:

human

Background Information

MTDH, also known as AEG-1, is a single-pass transmembrane protein with its gene located at chromosome 8q22, the abnormalities of which have been identified in several tumor types. MTDH is overexpressed in a number of malignancies, such as breast cancer, malignant glioma, and neuroblastoma, and its overexpression is associated with poor clinical outcome. MTDH plays an important role in the regulation of carcinogenesis and tumor progression.

Storage

Storage:

Store at -80°C.

The product is shipped with ice packs. Upon receipt, store it immediately at -80°C

Storage Buffer:

PBS Only

For technical support and original validation data for this product please contact:

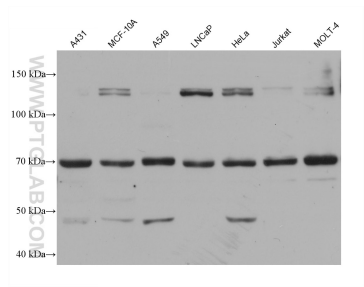
T: 4006900926

E: Proteintech-CN@ptglab.com

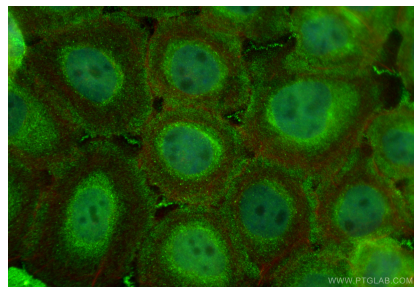
W: ptgcn.com

This product is exclusively available under Proteintech Group brand and is not available to purchase from any other manufacturer.

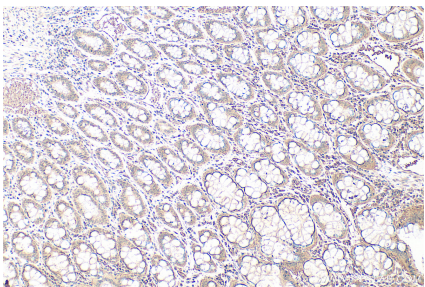
Selected Validation Data



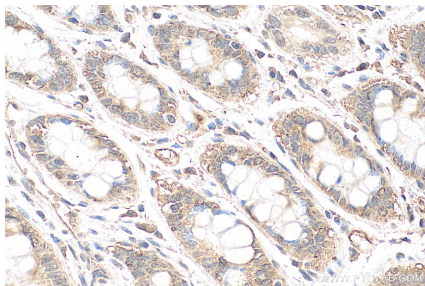
Various lysates were subjected to SDS PAGE followed by western blot with 68592-1-Ig (AEG-1 antibody) at dilution of 1:10000 incubated at room temperature for 1.5 hours. This data was developed using the same antibody clone with 68592-1-PBS in a different storage buffer formulation.



Immunofluorescent analysis of (4% PFA) fixed A431 cells using AEG-1/MTDH antibody (68592-1-Ig, Clone: 1D8C2) at dilution of 1:800 and CoraLite®488-Conjugated Goat Anti-Mouse IgG(H+L) (SA00013-1), CL594-Phalloidin (red). This data was developed using the same antibody clone with 68592-1-PBS in a different storage buffer formulation.



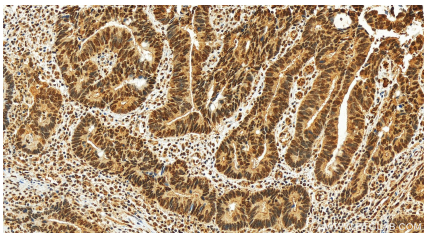
Immunohistochemical analysis of paraffin-embedded human rectal cancer tissue slide using 68592-1-Ig (AEG-1/MTDH antibody) at dilution of 1:1000 (under 10x lens). Heat mediated antigen retrieval with Tris-EDTA buffer (pH 9.0). This data was developed using the same antibody clone with 68592-1-PBS in a different storage buffer formulation.



Immunohistochemical analysis of paraffin-embedded human rectal cancer tissue slide using 68592-1-Ig (AEG-1/MTDH antibody) at dilution of 1:1000 (under 40x lens). Heat mediated antigen retrieval with Tris-EDTA buffer (pH 9.0). This data was developed using the same antibody clone with 68592-1-PBS in a different storage buffer formulation.



Immunohistochemical analysis of paraffin-embedded human tonsillitis tissue slide using 68592-1-Ig (AEG-1/MTDH antibody) at dilution of 1:1000 (under 20x lens). Heat mediated antigen retrieval with Tris-EDTA buffer (pH 9.0). This data was developed using the same antibody clone with 68592-1-PBS in a different storage buffer formulation.



Immunohistochemical analysis of paraffin-embedded human rectal cancer tissue slide using 68592-1-Ig (AEG-1/MTDH antibody) at dilution of 1:1000 (under 20x lens). Heat mediated antigen retrieval with Tris-EDTA buffer (pH 9.0). This data was developed using the same antibody clone with 68592-1-PBS in a different storage buffer formulation.