

For Research Use Only

AEG-1/MTDH Monoclonal antibody

Catalog Number: 68592-1-Ig



Basic Information

Catalog Number: 68592-1-Ig	GenBank Accession Number: BC045642	Purification Method: Protein A purification
Concentration: 1000 ug/ml	GeneID (NCBI): 92140	CloneNo.: 1D8C2
Source: Mouse	UNIPROT ID: Q86UE4	Recommended Dilutions: WB 1:5000-1:50000 IHC 1:500-1:2000 IF/ICC 1:400-1:1600
Isotype: IgG1	Full Name: metadherin	
Immunogen Catalog Number: AG5033	Calculated MW: 582 aa, 64 kDa Observed MW: 70-80 kDa	

Applications

Tested Applications:
WB, IHC, IF/ICC, ELISA

Species Specificity:
human

**Note-IHC: suggested antigen retrieval with
TE buffer pH 9.0; (*) Alternatively, antigen
retrieval may be performed with citrate
buffer pH 6.0**

Positive Controls:

WB : A431 cells, MCF-10A cells, A549 cells, LNCaP cells, HeLa cells, Jurkat cells, MOLT-4 cells

IHC : human rectal cancer tissue, human tonsillitis tissue

IF/ICC : A431 cells,

Background Information

MTDH, also known as AEG-1, is a single-pass transmembrane protein with its gene located at chromosome 8q22, the abnormalities of which have been identified in several tumor types. MTDH is overexpressed in a number of malignancies, such as breast cancer, malignant glioma, and neuroblastoma, and its overexpression is associated with poor clinical outcome. MTDH plays an important role in the regulation of carcinogenesis and tumor progression.

Storage

Storage:
Store at -20°C. Stable for one year after shipment.
Storage Buffer:
PBS with 0.02% sodium azide and 50% glycerol pH 7.3.
Aliquoting is unnecessary for -20°C storage

For technical support and original validation data for this product please contact:

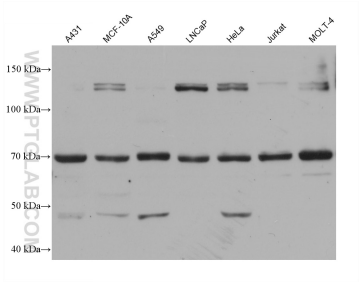
T: 4006900926

E: Proteintech-CN@ptglab.com

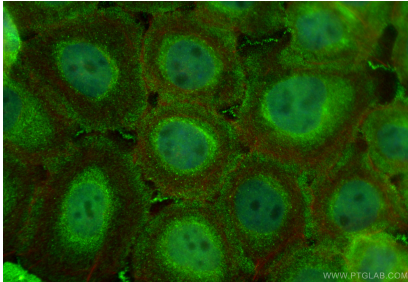
W: ptgcn.com

This product is exclusively available under Proteintech Group brand and is not available to purchase from any other manufacturer.

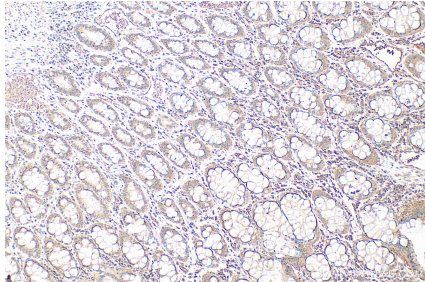
Selected Validation Data



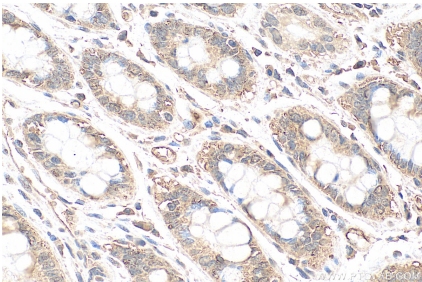
Various lysates were subjected to SDS PAGE followed by western blot with 68592-1-Ig (AEG-1 antibody) at dilution of 1:10000 incubated at room temperature for 1.5 hours.



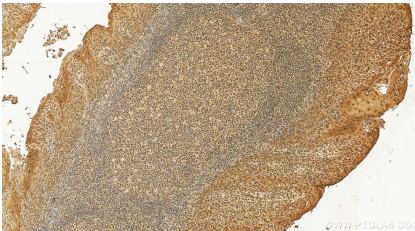
Immunofluorescent analysis of (4% PFA) fixed A431 cells using AEG-1/MTDH antibody (68592-1-Ig, Clone: 1D8C2) at dilution of 1:800 and CoraLite®488-Conjugated Goat Anti-Mouse IgG(H+L) (SA00013-1), CL594-Phalloidin (red).



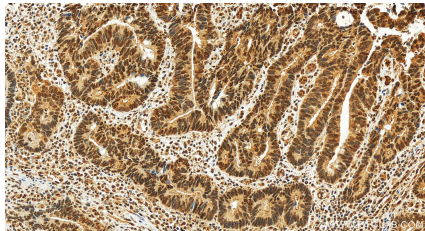
Immunohistochemical analysis of paraffin-embedded human rectal cancer tissue slide using 68592-1-Ig (AEG-1/MTDH antibody) at dilution of 1:1000 (under 10x lens). Heat mediated antigen retrieval with Tris-EDTA buffer (pH 9.0).



Immunohistochemical analysis of paraffin-embedded human rectal cancer tissue slide using 68592-1-Ig (AEG-1/MTDH antibody) at dilution of 1:1000 (under 40x lens). Heat mediated antigen retrieval with Tris-EDTA buffer (pH 9.0).



Immunohistochemical analysis of paraffin-embedded human tonsillitis tissue slide using 68592-1-Ig (AEG-1/MTDH antibody) at dilution of 1:1000 (under 20x lens). Heat mediated antigen retrieval with Tris-EDTA buffer (pH 9.0).



Immunohistochemical analysis of paraffin-embedded human rectal cancer tissue slide using 68592-1-Ig (AEG-1/MTDH antibody) at dilution of 1:1000 (under 20x lens). Heat mediated antigen retrieval with Tris-EDTA buffer (pH 9.0).