

For Research Use Only

# THOP1 Monoclonal antibody

Catalog Number: 68587-1-Ig



## Basic Information

<b>Catalog Number:</b> 68587-1-Ig	<b>GenBank Accession Number:</b> BC000135	<b>Purification Method:</b> Protein A purification
<b>Size:</b> 1000 µg/ml	<b>GeneID (NCBI):</b> 7064	<b>CloneNo.:</b> 1B11A11
<b>Source:</b> Mouse	<b>UNIPROT ID:</b> P52888	<b>Recommended Dilutions:</b> WB 1:5000-1:50000
<b>Isotype:</b> IgG2a	<b>Full Name:</b> thimet oligopeptidase 1	
<b>Immunogen Catalog Number:</b> AG2268	<b>Calculated MW:</b> 689 aa, 79 kDa	
	<b>Observed MW:</b> 79 kDa	

## Applications

<b>Tested Applications:</b> WB, ELISA	<b>Positive Controls:</b> WB : LNCaP cells, rat brain tissue, HeLa cells, Jurkat cells, K-562 cells, HSC-T6 cells, NIH/3T3 cells, Mouse brain tissue
<b>Species Specificity:</b> Human, Mouse, Rat	

## Background Information

Thimet oligopeptidase(THOP1) is a metallopeptidase implicated in the metabolism of many sleep-related peptides, including angiotensin I, gonadotropin releasing hormone (GnRH), neurotensin, and opioid peptides

## Storage

**Storage:**  
Store at -20°C. Stable for one year after shipment.  
**Storage Buffer:**  
PBS with 0.02% sodium azide and 50% glycerol pH 7.3.  
Aliquoting is unnecessary for -20°C storage

For technical support and original validation data for this product please contact:

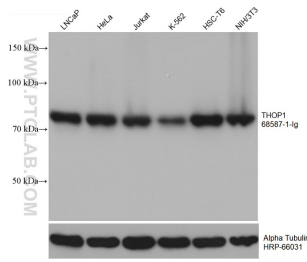
T: 4006900926

E: [Proteintech-CN@ptglab.com](mailto:Proteintech-CN@ptglab.com)

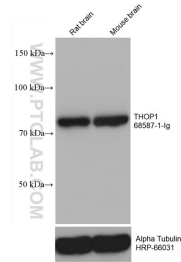
W: [ptgcn.com](http://ptgcn.com)

This product is exclusively available under Proteintech Group brand and is not available to purchase from any other manufacturer.

## Selected Validation Data



Various lysates were subjected to SDS PAGE followed by western blot with 68587-1-Ig (THOP1 antibody) at dilution of 1:20000 incubated at room temperature for 1.5 hours. The membrane was stripped and reblotted with HRP-conjugated Alpha Tubulin Monoclonal antibody (HRP-66031) as loading control.



Various lysates were subjected to SDS PAGE followed by western blot with 68587-1-Ig (THOP1 antibody) at dilution of 1:20000 incubated at room temperature for 1.5 hours. The membrane was stripped and reblotted with HRP-conjugated Alpha Tubulin Monoclonal antibody (HRP-66031) as loading control.