

For Research Use Only

TAPBPL Monoclonal antibody, PBS Only

Catalog Number: 68577-1-PBS



Basic Information

Catalog Number:

68577-1-PBS

Source:

Mouse

Isotype:

IgG1

Immunogen Catalog Number:

AG14371

GenBank Accession Number:

BC015017

GeneID (NCBI):

55080

UNIPROT ID:

Q9BX59

Full Name:

TAP binding protein-like

Calculated MW:

468 aa, 50 kDa

Observed MW:

55 kDa

Purification Method:

Protein G purification

CloneNo.:

1D12C2

Applications

Tested Applications:

WB, FC (Intra), Indirect ELISA

Species Specificity:

human

Background Information

TAPBPL, also named as TAPBP-R and TAPASIN-R, is a member of the variable-constant Ig superfamily that links MHC class I molecules to the transporter associated with antigen processing in the endoplasmic reticulum.

Storage

Storage:

Store at -80°C.

The product is shipped with ice packs. Upon receipt, store it immediately at -80°C

Storage Buffer:

PBS only, pH7.3

For technical support and original validation data for this product please contact:

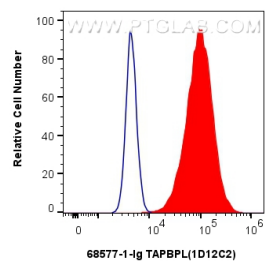
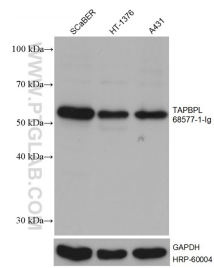
T: 4006900926

E: Proteintech-CN@ptglab.com

W: ptgcn.com

This product is exclusively available under Proteintech Group brand and is not available to purchase from any other manufacturer.

Selected Validation Data



Various lysates were subjected to SDS PAGE followed by western blot with 68577-1-Ig (TAPBPL antibody) at dilution of 1:10000 incubated at room temperature for 1.5 hours. The membrane was stripped and reblotted with HRP-conjugated GAPDH Monoclonal antibody (HRP-60004) as loading control. This data was developed using the same antibody clone with 68577-1-PBS in a different storage buffer formulation.

1x10⁶ A431 cells were intracellularly stained with 0.4 ug TAPBPL Monoclonal antibody (68577-1-Ig, Clone: 1D12C2) and Multi-rAb CoraLite[®] Plus 488-Goat Anti-Mouse Recombinant Secondary Antibody (H+L) (RGAM002) (red), or 0.4 ug Mouse IgG1 isotype control Mouse McAb (66360-1-Ig, Clone: 1F8D3) (blue). Cells were fixed with 4% PFA and permeabilized with Flow Cytometry Perm Buffer. This data was developed using the same antibody clone

