

For Research Use Only

LEO1 Monoclonal antibody

Catalog Number: 68568-1-Ig



Basic Information

Catalog Number:

68568-1-Ig

Size:

1000 µg/ml

Source:

Mouse

Isotype:

IgG1

Immunogen Catalog Number:

AG33577

GenBank Accession Number:

BC018147

GeneID (NCBI):

123169

UNIPROT ID:

Q8WVCO

Full Name:

Leo1, Paf1/RNA polymerase II complex component, homolog (S. cerevisiae)

Calculated MW:

666 aa, 75 kDa

Observed MW:

105 kDa

Purification Method:

Protein G purification

CloneNo.:

3D7A2

Recommended Dilutions:

WB 1:5000-1:50000

Applications

Tested Applications:

WB, ELISA

Species Specificity:

Human

Positive Controls:

WB : HepG2 cells, HT-29 cells, A549 cells, HEK-293 cells, LNCaP cells, MCF-7 cells, HeLa cells, Jurkat cells

Background Information

LEO1, also named as RNA polymerase-associated protein LEO1, is a 666 amino acid protein, which belongs to the LEO1 family. LEO1 is a component of the PAF1 complex (PAF1C) which has multiple functions during transcription by RNA polymerase II and is implicated in regulation of development and maintenance of embryonic stem cell pluripotency. The calculated molecular weight of LEO1 is 75 kDa, but the modified LEO1 protein is about 105 kDa (PMID: 15632063).

Storage

Storage:

Store at -20°C. Stable for one year after shipment.

Storage Buffer:

PBS with 0.02% sodium azide and 50% glycerol pH 7.3.

Aliquoting is unnecessary for -20°C storage

For technical support and original validation data for this product please contact:

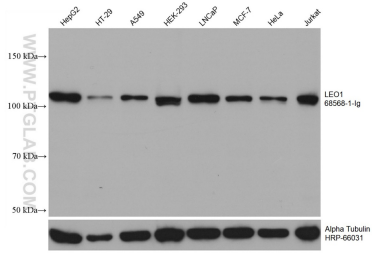
T: 4006900926

E: Proteintech-CN@ptglab.com

W: ptgcn.com

This product is exclusively available under Proteintech Group brand and is not available to purchase from any other manufacturer.

Selected Validation Data



Various lysates were subjected to SDS PAGE followed by western blot with 68568-1-Ig (LEO1 antibody) at dilution of 1:10000 incubated at room temperature for 1.5 hours. The membrane was stripped and reblotted with HRP-conjugated Alpha Tubulin Monoclonal antibody (HRP-66031) as loading control.