

# STARD10 Monoclonal antibody

Catalog Number: 68554-1-Ig

## Basic Information

**Catalog Number:**

68554-1-Ig

**Size:**

1000 µg/ml

**Source:**

Mouse

**Isotype:**

IgG1

**Immunogen Catalog Number:**

AG10932

**GenBank Accession Number:**

BC007919

**GeneID (NCBI):**

10809

**UNIPROT ID:**

Q9Y365

**Full Name:**

StAR-related lipid transfer (START) domain containing 10

**Calculated MW:**

291 aa, 33 kDa

**Observed MW:**

35-40 kDa

**Purification Method:**

Protein G purification

**CloneNo.:**

1B9A1

**Recommended Dilutions:**

WB 1:5000-1:50000

IP 0.5-4.0 µg for 1.0-3.0 mg of total protein lysate

IF/ICC 1:400-1:1600

## Applications

**Tested Applications:**

IF/ICC, IP, WB, ELISA

**Species Specificity:**

Human, mouse, rat, rabbit, pig

**Positive Controls:**

**WB :** SK-BR-3 cells, MCF-7 cells, T-47D cells, LNCaP cells, rat liver tissue, mouse liver tissue, pig liver tissue, rabbit liver tissue, rabbit testis tissue

**IP :** HepG2 cells,

**IF/ICC :** HeLa cells,

## Background Information

STARD10 (START domain-containing protein 10, also known as PCTP-like protein) is highly expressed in liver and responsible to transfer phosphatidylcholine. STARD10 was identified as a protein overexpressed in breast cancer that cooperates with the ErbB family of receptor tyrosine kinases in cellular transformation (PMID: 15911624). This antibody detected duplicate bands between 35-40 kDa (PMID: 15150109).

## Storage

**Storage:**

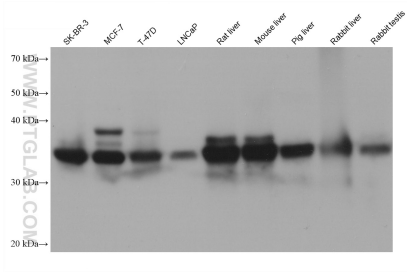
Store at -20°C. Stable for one year after shipment.

**Storage Buffer:**

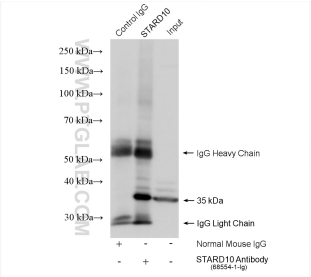
PBS with 0.02% sodium azide and 50% glycerol pH 7.3.

Aliquoting is unnecessary for -20°C storage

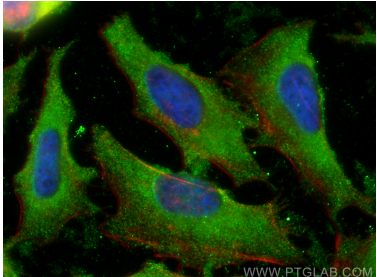
## Selected Validation Data



Various lysates were subjected to SDS PAGE followed by western blot with 68554-1-Ig (STARD10 antibody) at dilution of 1:20000 incubated at room temperature for 1.5 hours.



IP result of anti-STARD10 (IP:68554-1-Ig, 4ug; Detection:68554-1-Ig 1:6000) with HepG2 cells lysate 1480 ug.



Immunofluorescent analysis of (-20°C Ethanol) fixed HeLa cells using STARD10 antibody (68554-1-Ig, Clone: 1B9A1 ) at dilution of 1:800 and CoraLite®488-Conjugated AffiniPure Goat Anti-Mouse IgG(H+L), CL594-Phalloidin (red).