

RAB35 Monoclonal antibody, PBS Only

Catalog Number: 68552-1-PBS

Basic Information

Catalog Number:

68552-1-PBS

Size:

1 mg/ml

Source:

Mouse

Isotype:

IgG2a

Immunogen Catalog Number:

AG21424

GenBank Accession Number:

BC015931

GeneID (NCBI):

11021

UNIPROT ID:

Q15286

Full Name:

RAB35, member RAS oncogene family

Calculated MW:

201 aa, 23 kDa

Observed MW:

23 kDa

Purification Method:

Protein A purification

CloneNo.:

3H3E1

Applications

Tested Applications:

WB, Indirect ELISA

Species Specificity:

Human, mouse, rat, rabbit

Background Information

RAB35 is a member of the small GTPase superfamily. Like the other Rab proteins, RAB35 has 2 consecutive cysteine residues at its C terminus, and this region is thought to be involved in membrane association. Rab35 is found on the cell surface and endosomes, where it has been proposed to play a role in recycling of the transferrin and other receptors.

Storage

Storage:

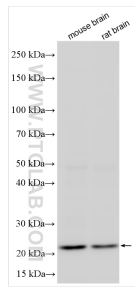
Store at -80°C.

The product is shipped with ice packs. Upon receipt, store it immediately at -80°C

Storage Buffer:

PBS Only

Selected Validation Data



Various lysates were subjected to SDS PAGE followed by western blot with 68552-1-Ig (RAB35 antibody) at dilution of 1:4000 incubated at room temperature for 1.5 hours. This data was developed using the same antibody clone with 68552-1-PBS in a different storage buffer formulation.