

For Research Use Only

Spermidine synthase Monoclonal antibody, PBS Only



Catalog Number: 68548-1-PBS

Basic Information

Catalog Number: 68548-1-PBS	GenBank Accession Number: BC000309	Purification Method: Protein A purification
Size: 1 mg/ml	GeneID (NCBI): 6723	CloneNo.: 2F4E10
Source: Mouse	UNIPROT ID: P19623	
Isotype: IgG2b	Full Name: spermidine synthase	
Immunogen Catalog Number: AG33919	Calculated MW: 302 aa, 34 kDa	
	Observed MW: 34 kDa	

Applications

Tested Applications:
WB, Indirect ELISA, IF

Species Specificity:
Human

Background Information

Spermidine synthase is an enzyme that catalyzes the transfer of the propylamine group from S-adenosylmethionine to putrescine in the biosynthesis of spermidine. The polyamines putrescine, spermine, and spermidine are ubiquitous polycationic mediators of cell growth and differentiation. Spermidine synthases catalyze the production of the linear triamine, spermidine, from putrescine. They utilize decarboxylated S-adenosylmethionine (dc-SAM), a universal cofactor of aminopropyltransferases, as a donor of the aminopropyl moiety (PMID:31134111).

Storage

Storage:
Store at -80°C.
The product is shipped with ice packs. Upon receipt, store it immediately at -80°C

Storage Buffer:
PBS Only

For technical support and original validation data for this product please contact:

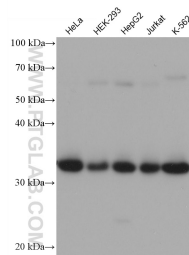
T: 4006900926

E: Proteintech-CN@ptglab.com

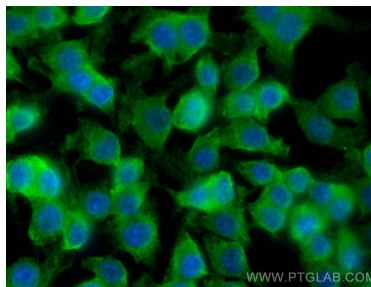
W: ptgcn.com

This product is exclusively available under Proteintech Group brand and is not available to purchase from any other manufacturer.

Selected Validation Data



Various lysates were subjected to SDS PAGE followed by western blot with 68548-1-Ig (Spermidine synthase antibody) at dilution of 1:10000 incubated at room temperature for 1.5 hours. This data was developed using the same antibody clone with 68548-1-PBS in a different storage buffer formulation.



Immunofluorescent analysis of (4% PFA) fixed RAW 264.7 cells using Spermidine synthase antibody (68548-1-Ig, Clone: 2F4E10) at dilution of 1:400 and CoraLite®488-Conjugated AffiniPure Goat Anti-Mouse IgG(H+L). This data was developed using the same antibody clone with 68548-1-PBS in a different storage buffer formulation.