

SKIV2L Monoclonal antibody

Catalog Number: 68547-1-Ig

Basic Information

Catalog Number: 68547-1-Ig	GenBank Accession Number: BC015758	Purification Method: Protein A purification
Size: 1000 ug/ml	GeneID (NCBI): 6499	CloneNo.: 1A9G2
Source: Mouse	UNIPROT ID: Q15477	Recommended Dilutions: WB 1:2000-1:10000 IHC 1:1000-1:4000
Isotype: IgG2a	Full Name: superkiller viralicidic activity 2-like (S. cerevisiae)	
Immunogen Catalog Number: AG33679	Calculated MW: 1246 aa, 138 kDa Observed MW: 138-145 kDa	

Applications

Tested Applications:

WB, IHC, ELISA

Species Specificity:

human

Note-IHC: suggested antigen retrieval with TE buffer pH 9.0; (*) Alternatively, antigen retrieval may be performed with citrate buffer pH 6.0

Positive Controls:

WB : HEK-293 cells, HepG2 cells, Jurkat cells, MOLT-4 cells, NK-92 cells

IHC : human placenta tissue,

Background Information

The Ski complex is a multiprotein complex required for exosome-mediated RNA surveillance, including the regulation of normal mRNA and the decay of nonfunctional mRNA. Component of the Ski complex which is thought to be involved in exosome-mediated RNA decay and associates with transcriptionally active genes in a manner dependent on PAF1 complex (PAF1C) [PMID:22444670]. SKIV2L, one component of the Ski complex, acts as an RNA helicase with a role in exosome recruitment or activation. It is involved in the degradation of RNAs by the exosome and may have a role in autophagy [PMID:11719186].

Storage

Storage:

Store at -20°C. Stable for one year after shipment.

Storage Buffer:

PBS with 0.02% sodium azide and 50% glycerol pH 7.3.

Aliquoting is unnecessary for -20°C storage

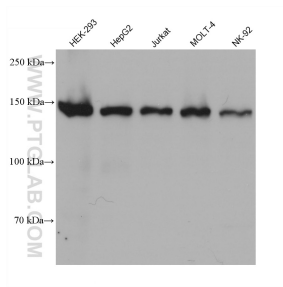
For technical support and original validation data for this product please contact:

T: 4006900926

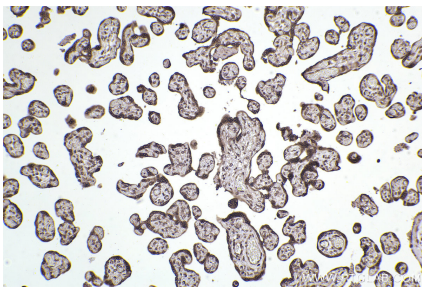
E: Proteintech-CN@ptglab.comW: ptgcn.com

This product is exclusively available under Proteintech Group brand and is not available to purchase from any other manufacturer.

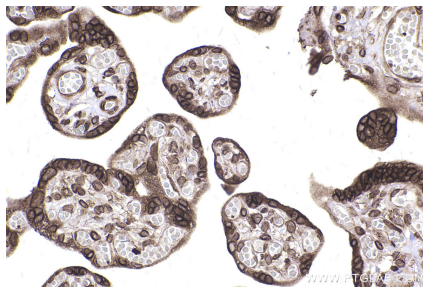
Selected Validation Data



Various lysates were subjected to SDS PAGE followed by western blot with 68547-1-Ig (SKIV2L antibody) at dilution of 1:5000 incubated at room temperature for 1.5 hours.



Immunohistochemical analysis of paraffin-embedded human placenta tissue slide using 68547-1-Ig (SKIV2L antibody) at dilution of 1:2000 (under 10x lens). Heat mediated antigen retrieval with Tris-EDTA buffer (pH 9.0).



Immunohistochemical analysis of paraffin-embedded human placenta tissue slide using 68547-1-Ig (SKIV2L antibody) at dilution of 1:2000 (under 40x lens). Heat mediated antigen retrieval with Tris-EDTA buffer (pH 9.0).