

For Research Use Only

N-cadherin Monoclonal antibody, PBS Only (Detector)

Catalog Number: 68532-2-PBS



Basic Information

Catalog Number:	68532-2-PBS	GenBank Accession Number:	NM_001792.4	Purification Method:	Protein G purification
Size:	1 mg/ml	GeneID (NCBI):	1000	CloneNo.:	2D9G1
Source:	Mouse	UNIPROT ID:	P19022-1		
Isotype:	IgG1	Full Name:	cadherin 2, type 1, N-cadherin (neuronal)		
		Calculated MW:	100 kDa		
		Observed MW:	130 kDa		

Applications

Tested Applications:
WB, IF/ICC, FC, Cytometric bead array, Indirect ELISA

Species Specificity:
human, mouse, rat, pig, rabbit

Background Information

Cadherins are a family of transmembrane glycoproteins that mediate calcium-dependent cell-cell adhesion and play an important role in the maintenance of normal tissue architecture. N-cadherin (neural cadherin), also known as CDH2 (cadherin 2), is a 130-kDa transmembrane protein and a classical member of the cadherin superfamily which also include E-, P-, R-, and B-cadherins. Expression of N-cadherin has been reported on various cell types including neurons, endothelial cells and cardiac myocytes (PMID: 11282032; 9508779; 8125202). N-cadherin has functions in early brain morphogenesis, synaptogenesis and synaptic plasticity (PMID: 23321619). The N-cadherin ectodomain can be cleaved, leading to the generation of a 90 kD N-terminal fragment (PMID: 16998833; 17028923).

Storage

Storage:
Store at -80°C.

The product is shipped with ice packs. Upon receipt, store it immediately at -80°C

Storage Buffer:
PBS Only

For technical support and original validation data for this product please contact:

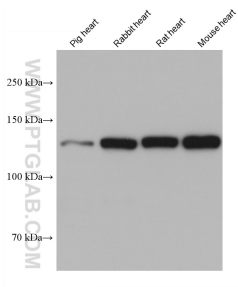
T: 4006900926

E: Proteintech-CN@ptglab.com

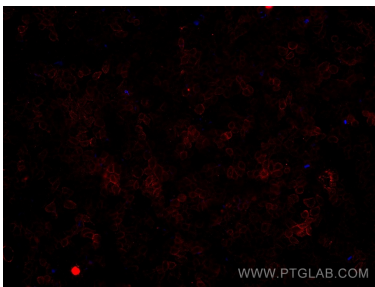
W: ptgcn.com

This product is exclusively available under Proteintech Group brand and is not available to purchase from any other manufacturer.

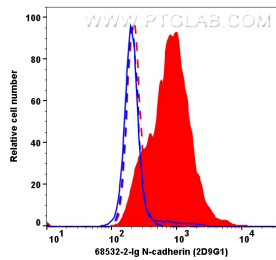
Selected Validation Data



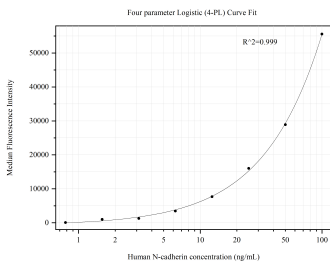
Various lysates were subjected to SDS PAGE followed by western blot with 68532-2-Ig (N-cadherin antibody) at dilution of 1:10000 incubated at room temperature for 1.5 hours. This data was developed using the same antibody clone with 68532-2-PBS in a different storage buffer formulation.



Immunofluorescent analysis of un-fixed HepG2 cells using N-cadherin antibody (68532-2-Ig, Clone: 2D9G1) at dilution of 1:500 and Multi-rAb CoraLite® Plus 594-Goat Anti-Mouse Recombinant Secondary Antibody (H+L) (Cat.NO. RGAM004). This data was developed using the same antibody clone with 68532-2-PBS in a different storage buffer formulation.



1x10⁶ MCF-7 (red, dashed) and SH-SY5Y (red, filled) were surface stained with 0.2 μg N-cadherin Monoclonal antibody (68532-2-Ig, Clone: 2D9G1) and CoraLite® Plus 647-Goat Anti-Mouse Recombinant Secondary Antibody (H+L)(Cat.NO.RGAM005). Mouse IgG1 isotype control (66360-1-Ig, Clone: 1F8D3, blue) was parallel stained as control. Cells were not fixed. This data was developed using the same antibody clone with 68532-2-PBS in a different storage buffer formulation.



Cytometric bead array standard curve of MP50439-1, N-cadherin Monoclonal Matched Antibody Pair, PBS Only. Capture antibody: 66219-2-PBS. Detection antibody: 68532-2-PBS. Standard:Eg0701. Range: 0.781-100 ng/mL