

For Research Use Only

UQCRFS1 Monoclonal antibody

Catalog Number: 68529-1-Ig **1 Publications**



Basic Information

Catalog Number: 68529-1-Ig	GenBank Accession Number: BC010035	Purification Method: Protein G purification
Concentration: 1000 ug/ml	GeneID (NCBI): 7386	CloneNo.: 1F11C4
Source: Mouse	UNIPROT ID: P47985	Recommended Dilutions: WB 1:5000-1:50000 IF/ICC 1:200-1:800
Isotype: IgG1	Full Name: ubiquinol-cytochrome c reductase, Rieske iron-sulfur polypeptide 1	
Immunogen Catalog Number: AG13307	Calculated MW: 30 kDa	
	Observed MW: 25 kDa	

Applications

Tested Applications: WB, IF/ICC, ELISA	Positive Controls:
Cited Applications: WB	WB : HeLa cells, Jurkat cells, HEK-293 cells, 4T1 cells, HSC-T6 cells, NIH/3T3 cells, pig brain tissue, rat brain tissue, mouse brain tissue
Species Specificity: human, mouse, rat, pig, rabbit	IF/ICC : HeLa cells,
Cited Species: mouse	

Background Information

The ubiquinol cytochrome c reductase UQCRFS1 is a key subunit of the cytochrome bc1 complex (complex III) of the mitochondrial respiratory chain. The UQCRFS1 gene encode a 30 kDa protein with a transit peptide and it appears to be involved in development of more aggressive phenotype of breast cancer(PMID:15047214). UQCRFS1 is also named as RISP, complex III subunit 5, cytochrome b-c1 complex subunit 5 and rieske iron-sulfur protein.

Notable Publications

Author	Pubmed ID	Journal	Application
Yi Luo	39000167	Int J Mol Sci	WB

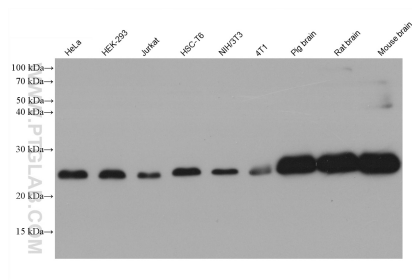
Storage

Storage:
Store at -20°C. Stable for one year after shipment.
Storage Buffer:
PBS with 0.02% sodium azide and 50% glycerol pH 7.3.
Aliquoting is unnecessary for -20°C storage

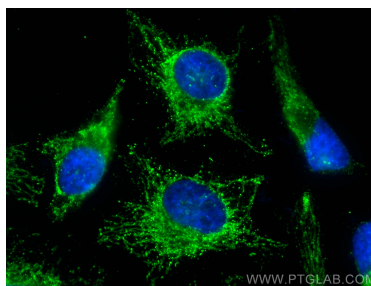
For technical support and original validation data for this product please contact:
T: 4006900926 E: Proteintech-CN@ptglab.com W: ptgcn.com

This product is exclusively available under Proteintech Group brand and is not available to purchase from any other manufacturer.

Selected Validation Data



Various lysates were subjected to SDS PAGE followed by western blot with 68529-1-Ig (UQCRCF1 antibody) at dilution of 1:20000 incubated at room temperature for 1.5 hours.



Immunofluorescent analysis of (4% PFA) fixed HeLa cells using UQCRCF1 antibody (68529-1-Ig, Clone: 1F11C4) at dilution of 1:400 and CoraLite®488-Conjugated AffiniPure Goat Anti-Mouse IgG(H+L).