

For Research Use Only

MTCO2 Monoclonal antibody

Catalog Number: 68527-1-Ig

Featured Product



Basic Information

Catalog Number:

68527-1-Ig

Size:

1000 μ g/ml

Source:

Mouse

Isotype:

IgG1

GenBank Accession Number:

YP_003024029

GeneID (NCBI):

4513

UNIPROT ID:

P00403

Full Name:

cytochrome c oxidase II

Calculated MW:

26 kDa

Observed MW:

23-26 kDa

Purification Method:

Protein A purification

CloneNo.:

10G14F4

Recommended Dilutions:

WB 1:5000-1:50000

Applications

Tested Applications:

WB, ELISA

Species Specificity:

human

Positive Controls:

WB : U2OS cells, 143B cells, A431 cells, HeLa cells, HepG2 cells, Jurkat cells, LNCaP cells, K-562 cells

Background Information

MTCO2, also named as COII, COXII, and COX2, belongs to the cytochrome c oxidase subunit 2 family. It is the component of the respiratory chain that catalyzes the reduction of oxygen to water. Subunits 1-3 form the functional core of the enzyme complex. Subunit 2 transfers the electrons from cytochrome c via its binuclear copper A center to the bimetallic center of the catalytic subunit 1. Defects in COX2 are a cause of mitochondrial complex IV deficiency (MT-C4D).

Storage

Storage:

Store at -20°C. Stable for one year after shipment.

Storage Buffer:

PBS with 0.02% sodium azide and 50% glycerol pH 7.3.

Aliquoting is unnecessary for -20°C storage

For technical support and original validation data for this product please contact:

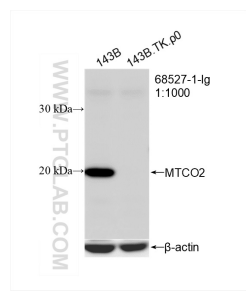
T: 4006900926

E: Proteintech-CN@ptglab.com

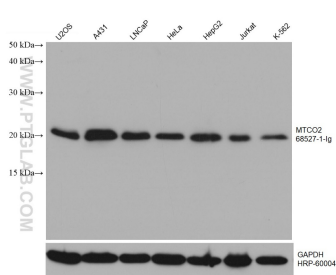
W: ptgcn.com

This product is exclusively available under Proteintech Group brand and is not available to purchase from any other manufacturer.

Selected Validation Data



WB result of MTCO2 antibody (MTCO2; 1:1000; incubated at room temperature for 1.5 hours) with 143B and 143B.TK. ρ 0 cell. 143B is wild-type cell line, 143B.TK. ρ 0 is mtDNA deletion cell line.



Various lysates were subjected to SDS PAGE followed by western blot with 68527-1-Ig (MTCO2 antibody) at dilution of 1:10000 incubated at room temperature for 1.5 hours.