

For Research Use Only

AFG3L2 Monoclonal antibody, PBS Only

Catalog Number: 68517-1-PBS



Basic Information

Catalog Number:

68517-1-PBS

Size:

1mg/ml

Source:

Mouse

Isotype:

IgG2a

Immunogen Catalog Number:

AG7180

GenBank Accession Number:

BC065016

GeneID (NCBI):

10939

UNIPROT ID:

Q9Y4W6

Full Name:

AFG3 ATPase family gene 3-like 2 (yeast)

Calculated MW:

88 kDa

Observed MW:

80 kDa

Purification Method:

Protein A purification

CloneNo.:

1C12F3

Applications

Tested Applications:

WB, IF/ICC, FC (Intra), Indirect ELISA

Species Specificity:

human, mouse, rat, pig, rabbit

Background Information

AFG3L2 is the catalytic subunit of the m-AAA protease, an ATP-dependent proteolytic complex of the mitochondrial inner membrane that degrades misfolded proteins and regulates ribosome assembly (PMID:17101804). Human AFG3L2 is an 80-kDa protein encoded by a 17-exon gene and highly and selectively expressed in human cerebellar Purkinje cells (PMID:20208537) and it can exist as a truncated 65 kDa protein (PMID:18337413). Defects in AFG3L2 are the cause of spinocerebellar ataxia type 28 (SCA28) and spastic ataxia autosomal recessive type 5 (SPAX5).

Storage

Storage:

Store at -80°C.

The product is shipped with ice packs. Upon receipt, store it immediately at -80°C

Storage Buffer:

PBS Only

For technical support and original validation data for this product please contact:

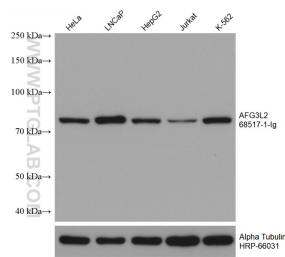
T: 4006900926

E: Proteintech-CN@ptglab.com

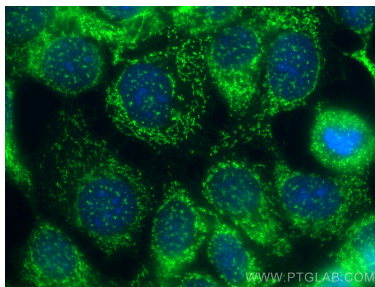
W: ptgcn.com

This product is exclusively available under Proteintech Group brand and is not available to purchase from any other manufacturer.

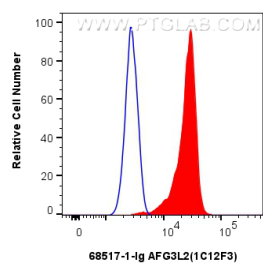
Selected Validation Data



Various lysates were subjected to SDS PAGE followed by western blot with 68517-1-Ig (AFG3L2 antibody) at dilution of 1:4000 incubated at room temperature for 1.5 hours. This data was developed using the same antibody clone with 68517-1-PBS in a different storage buffer formulation.



Immunofluorescent analysis of (-20°C Methanol) fixed MCF-7 cells using AFG3L2 antibody (68517-1-Ig, Clone: 1C12F3) at dilution of 1:400 and Multi-rAb CoraLite® Plus 488-Goat Anti-Mouse Recombinant Secondary Antibody (H+L) (RGAM002). This data was developed using the same antibody clone with 68517-1-PBS in a different storage buffer formulation.



1x10⁶ HeLa cells were intracellularly stained with 0.25 ug AFG3L2 Monoclonal antibody (68517-1-Ig, Clone:1C12F3) and CoraLite®488-Conjugated Goat Anti-Mouse IgG(H+L) (SA00013-1)(red), or 0.25 ug Mouse IgG2a isotype control Mouse McAb (66360-2-Ig, Clone: 11A1B2) (blue). Cells were fixed with 4% PFA and permeabilized with Flow Cytometry Perm Buffer (PF00011-C). This data was developed using the same antibody clone with 68517-1-PBS in a different storage buffer