

For Research Use Only

# ATL3 Monoclonal antibody

Catalog Number: 68516-1-Ig

Featured Product



## Basic Information

Catalog Number:

68516-1-Ig

Size:

1000 ug/ml

Source:

Mouse

Isotype:

IgG1

Immunogen Catalog Number:

AG10248

GenBank Accession Number:

BC077727

GeneID (NCBI):

25923

UNIPROT ID:

Q6DD88

Full Name:

atlastin GTPase 3

Calculated MW:

541 aa, 61 kDa

Observed MW:

61 kDa

Purification Method:

Protein G purification

CloneNo.:

2E7C4

Recommended Dilutions:

WB 1:5000-1:50000

## Applications

Tested Applications:

WB, ELISA

Species Specificity:

human, mouse, rat, rabbit

Positive Controls:

WB : PC-3 cells, Jurkat cells, HeLa cells, K-562 cells, rabbit testis tissue, rat testis tissue, mouse testis tissue

## Background Information

ATL3, belonging to a class of dynamin-like GTPase, was reported to mediate ER fusion. ATL3 is required for the proper formation of the network of interconnected tubules of the endoplasmic reticulum. ATL3 functions as a receptor for ER-phagy, promoting tubular ER degradation upon starvation. Mutations in this gene may be associated with hereditary sensory neuropathy type IF.

## Storage

Storage:

Store at -20°C. Stable for one year after shipment.

Storage Buffer:

PBS with 0.02% sodium azide and 50% glycerol pH 7.3.

Aliquoting is unnecessary for -20°C storage

For technical support and original validation data for this product please contact:

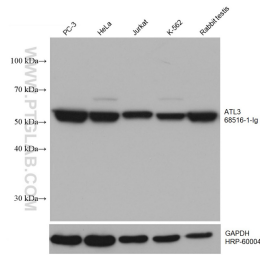
T: 4006900926

E: [Proteintech-CN@ptglab.com](mailto:Proteintech-CN@ptglab.com)

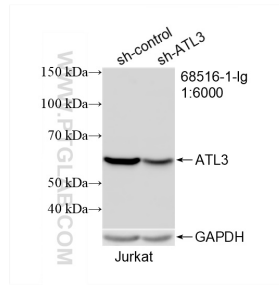
W: [ptgcn.com](http://ptgcn.com)

This product is exclusively available under Proteintech Group brand and is not available to purchase from any other manufacturer.

## Selected Validation Data



Various lysates were subjected to SDS PAGE followed by western blot with 68516-1-Ig (ATL3 antibody) at dilution of 1:20000 incubated at room temperature for 1.5 hours.



WB result of ATL3 antibody (68516-1-Ig; 1:600; incubated at room temperature for 1.5 hours) with sh-Control and sh-ATL3 transfected Jurkat cells.