

# Lactotransferrin/LTF Monoclonal antibody

Catalog Number: 68509-1-Ig

## Basic Information

<b>Catalog Number:</b> 68509-1-Ig	<b>GenBank Accession Number:</b> BC015822	<b>Purification Method:</b> Protein A purification
<b>Size:</b> 1000 ug/ml	<b>GeneID (NCBI):</b> 4057	<b>CloneNo.:</b> 3D1G3
<b>Source:</b> Mouse	<b>UNIPROT ID:</b> P02788	<b>Recommended Dilutions:</b> WB 1:5000-1:50000 IHC 1:2000-1:8000
<b>Isotype:</b> IgG2a	<b>Full Name:</b> lactotransferrin	
<b>Immunogen Catalog Number:</b> AG33645	<b>Calculated MW:</b> 80 kDa <b>Observed MW:</b> 78 kDa	

## Applications

**Tested Applications:**  
WB, IHC, ELISA

**Species Specificity:**  
human

**Note-IHC: suggested antigen retrieval with TE buffer pH 9.0; (\*) Alternatively, antigen retrieval may be performed with citrate buffer pH 6.0**

**Positive Controls:**

**WB :** human saliva,

**IHC :** human skin cancer tissue,

## Background Information

LTF (Lactotransferrin) is also named as GIG12, LF and belongs to the transferrin family. It is an iron binding transport protein which can bind two atoms of ferric iron in association with the binding of an anion, usually bicarbonate. LTF is also an important protein component of the innate immune system that is broadly distributed within the body fluids. It can contribute to the activation of both the innate and adaptive immune responses by promoting the recruitment of leukocytes and activation of dendritic cells (PMID:18453607). This protein has 2 isoforms produced by alternative promoter usage. The human LTF can be isolated two fragments, an N-terminal tryptic fragment having an MW of 30 kDa and a C-terminal tryptic fragment having an MW of 50 kDa by a mild tryptic digest (PMID:3790094).

## Storage

**Storage:**  
Store at -20°C. Stable for one year after shipment.  
**Storage Buffer:**  
PBS with 0.02% sodium azide and 50% glycerol pH 7.3.  
**Aliquoting is unnecessary for -20°C storage**

For technical support and original validation data for this product please contact:

T: 4006900926

E: [Proteintech-CN@ptglab.com](mailto:Proteintech-CN@ptglab.com)

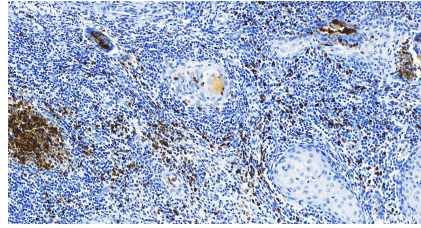
W: [ptgcn.com](http://ptgcn.com)

**This product is exclusively available under Proteintech Group brand and is not available to purchase from any other manufacturer.**

## Selected Validation Data



human saliva were subjected to SDS PAGE followed by western blot with 68509-1-Ig (Lactoferrin antibody) at dilution of 1:20000 incubated at room temperature for 1.5 hours.



Immunohistochemical analysis of paraffin-embedded skin cancer slide using 68509-1-Ig (LTF antibody) at dilution of 1:4000 (under 20x lens). Heat mediated antigen retrieval with Tris-EDTA buffer (pH 9.0).