

# ATP6V0D1 Monoclonal antibody

Catalog Number: 68506-1-Ig

## Basic Information

<b>Catalog Number:</b> 68506-1-Ig	<b>GenBank Accession Number:</b> BC008861	<b>Purification Method:</b> Protein G purification
<b>Size:</b> 1000 µg/ml	<b>GeneID (NCBI):</b> 9114	<b>CloneNo.:</b> 1G7A12
<b>Source:</b> Mouse	<b>UNIPROT ID:</b> P61421	<b>Recommended Dilutions:</b> WB 1:5000-1:20000 IP 0.5-4.0 µg for 1.0-3.0 mg of total protein lysate IHC 1:250-1:1000 IF/ICC 1:1200-1:4800
<b>Isotype:</b> IgG1	<b>Full Name:</b> ATPase, H <sup>+</sup> transporting, lysosomal 38kDa, VO subunit d1	
<b>Immunogen Catalog Number:</b> AG13012	<b>Calculated MW:</b> 351 aa, 40 kDa	
	<b>Observed MW:</b> 37-41 kDa	

## Applications

<b>Tested Applications:</b> IF/ICC, IHC, IP, WB, ELISA	<b>Positive Controls:</b>
<b>Species Specificity:</b> Human, Mouse, Rat, Pig, Rabbit, Chicken, Zebrafish	<b>WB :</b> HeLa cells, Jurkat cells, K-562 cells, pig brain tissue, rabbit brain tissue, rat brain tissue, mouse brain tissue, chicken brain tissue, zebrafish tissue
<b>Note-IHC: suggested antigen retrieval with TE buffer pH 9.0; (*) Alternatively, antigen retrieval may be performed with citrate buffer pH 6.0</b>	<b>IP :</b> HeLa cells,
	<b>IHC :</b> mouse kidney tissue,
	<b>IF/ICC :</b> HeLa cells,

## Background Information

ATP6V0D1(V-type proton ATPase subunit d 1) is also named as ATP6D, VPATPD and belongs to the V-ATPase V0D/AC39 subunit family. It is responsible for acidifying a variety of intracellular compartments in eukaryotic cells, thus providing most of the energy required for transport processes in the vacuolar system.

## Storage

**Storage:**  
Store at -20°C. Stable for one year after shipment.  
**Storage Buffer:**  
PBS with 0.02% sodium azide and 50% glycerol pH 7.3.  
**Aliquoting is unnecessary for -20°C storage**

For technical support and original validation data for this product please contact:

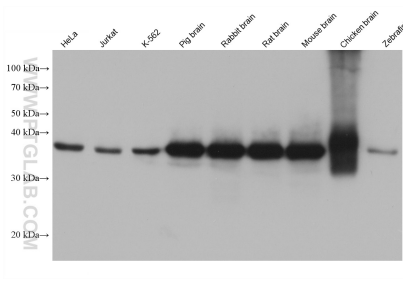
T: 4006900926

E: [Proteintech-CN@ptglab.com](mailto:Proteintech-CN@ptglab.com)

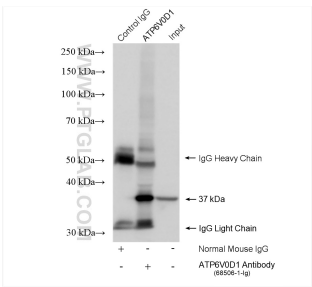
W: [ptgcn.com](http://ptgcn.com)

This product is exclusively available under Proteintech Group brand and is not available to purchase from any other manufacturer.

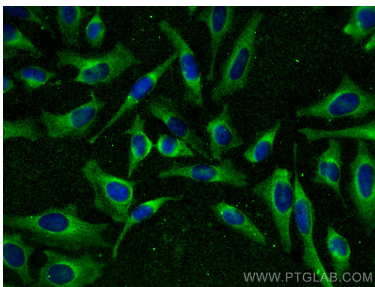
Selected Validation Data



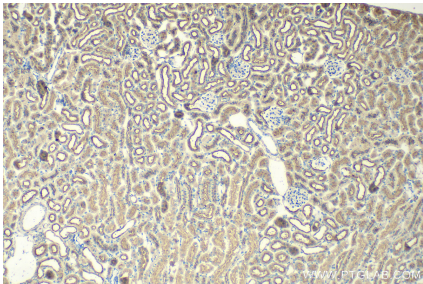
Various lysates were subjected to SDS PAGE followed by western blot with 68506-1-Ig (ATP6VOD1 antibody) at dilution of 1:10000 incubated at room temperature for 1.5 hours.



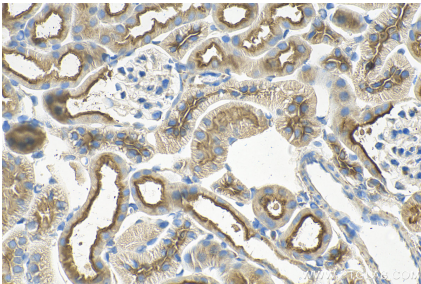
IP result of anti-ATP6VOD1 (IP:68506-1-Ig, 4ug; Detection:68506-1-Ig 1:3000) with HeLa cells lysate 1520 ug.



Immunofluorescent analysis of (-20°C Methanol) fixed HeLa cells using ATP6VOD1 antibody (68506-1-Ig, Clone: 1G7A12 ) at dilution of 1:2400 and CoraLite®488-Conjugated AffiniPure Goat Anti-Mouse IgG(H+L).



Immunohistochemical analysis of paraffin-embedded mouse kidney tissue slide using 68506-1-Ig (ATP6VOD1 antibody) at dilution of 1:500 (under 10x lens). Heat mediated antigen retrieval with Tris-EDTA buffer (pH 9.0).



Immunohistochemical analysis of paraffin-embedded mouse kidney tissue slide using 68506-1-Ig (ATP6VOD1 antibody) at dilution of 1:500 (under 40x lens). Heat mediated antigen retrieval with Tris-EDTA buffer (pH 9.0).