

ATP1A1/2 Monoclonal antibody, PBS Only

Catalog Number: 68505-1-PBS

Basic Information

Catalog Number:

68505-1-PBS

Concentration:

1mg/ml

Source:

Mouse

Isotype:

IgG1

Immunogen Catalog Number:

AG10489

GenBank Accession Number:

BC052271

GeneID (NCBI):

477

UNIPROT ID:

P50993

Full Name:

ATPase, Na⁺/K⁺ transporting, alpha 2
(+) polypeptide

Calculated MW:

1020 aa, 112 kDa

Observed MW:

97-100 kDa

Purification Method:

Protein A purification

CloneNo.:

3D8G1

Applications

Tested Applications:

WB, IF/ICC, Indirect ELISA

Species Specificity:

human, mouse, rat, pig

Background Information

ATP1A1/2 is the catalytic component of the active enzyme Na⁺/K⁺-ATPase, which catalyzes the hydrolysis of ATP coupled with the exchange of sodium and potassium ions across the plasma membrane. The Na⁺/K⁺-ATPase is composed of a larger catalytic α -subunit (~110 kDa) and a small β -subunit (~55 kDa). The α -subunit has four isoforms identified to date: α 1, α 2, α 3 and α 4. The α 1 isoform is expressed ubiquitously but the α 2 isoform is present largely in the skeletal muscle, heart and vascular smooth muscle. The α 3 isoform is found almost exclusively in neurons and ovaries. The α 4 isoform is expressed in sperm. This antibody can recognize ATP1A1 and ATP1A2.

Storage

Storage:

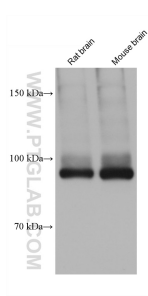
Store at -80°C.

The product is shipped with ice packs. Upon receipt, store it immediately at -80°C

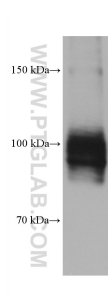
Storage Buffer:

PBS only, pH7.3

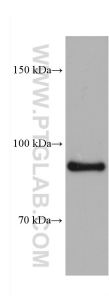
Selected Validation Data



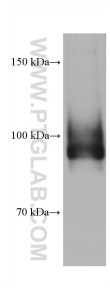
Various lysates were subjected to SDS PAGE followed by western blot with 68505-1-Ig (ATP1A1/2 antibody) at dilution of 1:20000 incubated at room temperature for 1.5 hours. This data was developed using the same antibody clone with 68505-1-PBS in a different storage buffer formulation.



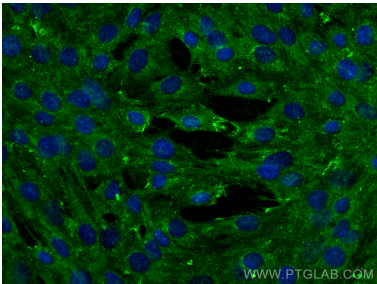
SK-BR-3 cells were subjected to SDS PAGE followed by western blot with 68505-1-Ig (ATP1A1/2 antibody) at dilution of 1:20000 incubated at room temperature for 1.5 hours. This data was developed using the same antibody clone with 68505-1-PBS in a different storage buffer formulation.



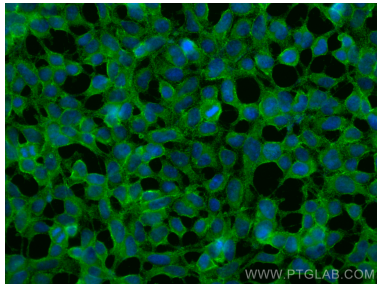
rat kidney tissue were subjected to SDS PAGE followed by western blot with 68505-1-Ig (ATP1A1/2 antibody) at dilution of 1:20000 incubated at room temperature for 1.5 hours. This data was developed using the same antibody clone with 68505-1-PBS in a different storage buffer formulation.



pig brain tissue were subjected to SDS PAGE followed by western blot with 68505-1-Ig (ATP1A1/2 antibody) at dilution of 1:20000 incubated at room temperature for 1.5 hours. This data was developed using the same antibody clone with 68505-1-PBS in a different storage buffer formulation.



Immunofluorescent analysis of (-20°C Ethanol) fixed C2C12 cells using ATP1A1/2 antibody (68505-1-Ig, Clone: 3D8G1) at dilution of 1:450 and Coralite®488-Conjugated Goat Anti-Mouse IgG(H+L) (SA00013-1). This data was developed using the same antibody clone with 68505-1-PBS in a different storage buffer formulation.



Immunofluorescent analysis of (-20°C Ethanol) fixed HEK-293 cells using ATP1A1/2 antibody (68505-1-Ig, Clone: 3D8G1) at dilution of 1:400 and Coralite®488-Conjugated Goat Anti-Mouse IgG(H+L) (SA00013-1). This data was developed using the same antibody clone with 68505-1-PBS in a different storage buffer formulation.