

METTL1 Monoclonal antibody, PBS Only

Catalog Number: 68501-1-PBS

Basic Information

| | | |
|-------------------------------------|--|--|
| Catalog Number: 68501-1-PBS | GenBank Accession Number: BC000550 | Purification Method: Protein A purification |
| Size: 1 mg/ml | GeneID (NCBI): 4234 | CloneNo.: 2C3G7 |
| Source: Mouse | UNIPROT ID: Q9UBP6 | |
| Isotype: IgG2a | Full Name: methyltransferase like 1 | |
| Immunogen Catalog Number: AG7055 | Calculated MW: 31 kDa | |
| | Observed MW: 31 kDa | |

Applications

Tested Applications:
WB, ELISA

Species Specificity:
Human, mouse, pig

Background Information

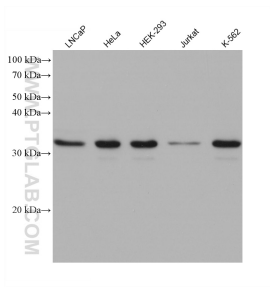
METTL1 methyltransferase mediates m7G methylation within miRNAs and regulates cell migration via its catalytic activity. METTL1 can be inactivated by phosphorylation at Ser27 by protein kinase B (PKB α). Overexpression of METTL1 is widely observed among human cancers. It is also crucial for the regulation of chemoresistance in cancer treatment. In addition, mutations in the human N7-methylguanosine (m7G) methyltransferase complex METTL1/WDR4 cause primordial dwarfism and brain malformation.

Storage

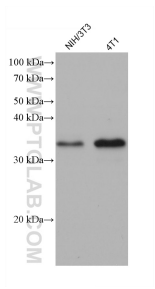
Storage:
Store at -80°C.
The product is shipped with ice packs. Upon receipt, store it immediately at -80°C

Storage Buffer:
PBS only

Selected Validation Data



Various lysates were subjected to SDS PAGE followed by western blot with 68501-1-Ig (METTL1 antibody) at dilution of 1:20000 incubated at room temperature for 1.5 hours. This data was developed using the same antibody clone with 68501-1-PBS in a different storage buffer formulation.



Various lysates were subjected to SDS PAGE followed by western blot with 68501-1-Ig (METTL1 antibody) at dilution of 1:20000 incubated at room temperature for 1.5 hours. This data was developed using the same antibody clone with 68501-1-PBS in a different storage buffer formulation.