

For Research Use Only

SEC16A Monoclonal antibody

Catalog Number: 68493-1-Ig



Basic Information

Catalog Number:

68493-1-Ig

Size:

1000 µg/ml

Source:

Mouse

Isotype:

IgG1

GenBank Accession Number:

NM_014866

GeneID (NCBI):

9919

UNIPROT ID:

O15027

Full Name:

SEC16 homolog A (*S. cerevisiae*)

Calculated MW:

234 kDa

Observed MW:

250-300 kDa

Purification Method:

Protein G purification

CloneNo.:

1D9A5

Recommended Dilutions:

WB 1:5000-1:50000

Applications

Tested Applications:

WB, ELISA

Species Specificity:

Human

Positive Controls:

WB : LNCaP cells, HeLa cells, HEK-293 cells, Jurkat cells

Background Information

SEC16A, also named as KIAA0310, SEC16 and SEC16L, is required for secretory cargo traffic from the endoplasmic reticulum to the Golgi apparatus. SAR1A-GTP-dependent assembly of SEC16A on the ER membrane forms an organized scaffold defining an ERES. SEC16A is required for normal transitional endoplasmic reticulum (tER) organization.

Storage

Storage:

Store at -20°C. Stable for one year after shipment.

Storage Buffer:

PBS with 0.02% sodium azide and 50% glycerol pH 7.3.

Aliquoting is unnecessary for -20°C storage

For technical support and original validation data for this product please contact:

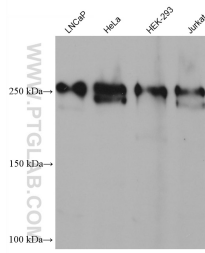
T: 4006900926

E: Proteintech-CN@ptglab.com

W: ptgcn.com

This product is exclusively available under Proteintech Group brand and is not available to purchase from any other manufacturer.

Selected Validation Data



Various lysates were subjected to SDS PAGE followed by western blot with 68493-1-Ig (SEC16A antibody) at dilution of 1:10000 incubated at room temperature for 1.5 hours.