

For Research Use Only

# OTUB1 Monoclonal antibody, PBS Only

Catalog Number: 68489-1-PBS



## Basic Information

Catalog Number:

68489-1-PBS

Size:

1mg/ml

Source:

Mouse

Isotype:

IgG2a

Immunogen Catalog Number:

AG33132

GenBank Accession Number:

BC007519

GeneID (NCBI):

55611

UNIPROT ID:

Q96FW1

Full Name:

OTU domain, ubiquitin aldehyde binding 1

Calculated MW:

31 kDa and 35 kDa

Observed MW:

31-35 kDa

Purification Method:

Protein A purification

CloneNo.:

2F7F8

## Applications

Tested Applications:

WB, IF, Indirect ELISA

Species Specificity:

human, mouse, rat

## Background Information

OTUB1 belongs to the ovarian tumor domain protease (OTU) subfamily of deubiquitinases, which could block ubiquitination leading to protein stability. OTUB1 mainly prefers k-48 and k-63 ubiquitin chains type, especially in k-48 ubiquitin chain. OTUB1 performs its deubiquitinating function via two distinct manners: the canonical and non-canonical manner. OTUB1 is involved in many critical immune response processes, containing CD8 T cell activation, PD-L1 related immune evasion, and several infectious diseases. OTUB1 plays an important role in the occurrence, proliferation, invasion, and progression of various cancers, such as bladder cancer, breast cancer, prostate cancer, and colorectal cancer (PMID: 34875341, 35296795). OTUB1 has 2 isoforms with molecular weights of 31 and 35 kDa, respectively.

## Storage

Storage:

Store at -80°C.

The product is shipped with ice packs. Upon receipt, store it immediately at -80°C

Storage Buffer:

PBS Only

For technical support and original validation data for this product please contact:

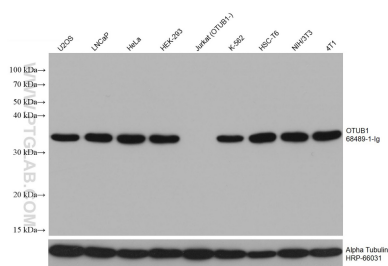
T: 4006900926

E: [Proteintech-CN@ptglab.com](mailto:Proteintech-CN@ptglab.com)

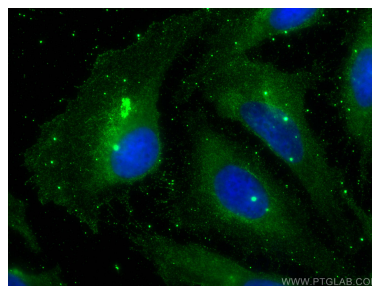
W: [ptgcn.com](http://ptgcn.com)

This product is exclusively available under Proteintech Group brand and is not available to purchase from any other manufacturer.

## Selected Validation Data



Various lysates were subjected to SDS PAGE followed by western blot with 68489-1-Ig (OTUB1 antibody) at dilution of 1:20000 incubated at room temperature for 1.5 hours. The membrane was stripped and reblotted with HRP-conjugated Alpha Tubulin Monoclonal antibody (HRP-66031) as loading control. This data was developed using the same antibody clone with 68489-1-PBS in a different storage buffer formulation.



Immunofluorescent analysis of (-20°C Methanol) fixed U2OS cells using OTUB1 antibody (68489-1-Ig, Clone: 2F7F8) at dilution of 1:400 and CoraLite®488-Conjugated AffiniPure Goat Anti-Mouse IgG(H+L). This data was developed using the same antibody clone with 68489-1-PBS in a different storage buffer formulation.