

For Research Use Only

# PYCR2 Monoclonal antibody

Catalog Number: 68488-1-Ig



## Basic Information

Catalog Number:

68488-1-Ig

Size:

500 µg/ml

Source:

Mouse

Isotype:

IgG1

Immunogen Catalog Number:

AG10923

GenBank Accession Number:

BC020553

GeneID (NCBI):

29920

UNIPROT ID:

Q96C36

Full Name:

pyrroline-5-carboxylate reductase family, member 2

Calculated MW:

320 aa, 34 kDa

Observed MW:

34 kDa

Purification Method:

Protein G purification

CloneNo.:

2G7D9

Recommended Dilutions:

WB 1:5000-1:20000

## Applications

Tested Applications:

WB, ELISA

Species Specificity:

Human

Positive Controls:

WB: Jurkat cells, LNCaP cells, K-562 cells, THP-1 cells, HEK-293 cells

## Background Information

PYCR2, also named as P5CR2, belongs to the pyrroline-5-carboxylate reductase family. It catalyses the reaction: L-proline + NAD(P)<sup>+</sup> = 1-pyrroline-5-carboxylate + NAD(P)H. This antibody may have cross reaction to PYCR1 due to the high homology.

## Storage

Storage:

Store at -20°C. Stable for one year after shipment.

Storage Buffer:

PBS with 0.02% sodium azide and 50% glycerol pH 7.3.

Aliquoting is unnecessary for -20°C storage

For technical support and original validation data for this product please contact:

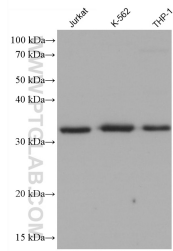
T: 4006900926

E: [Proteintech-CN@ptglab.com](mailto:Proteintech-CN@ptglab.com)

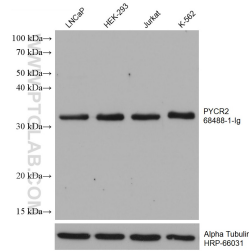
W: [ptgcn.com](http://ptgcn.com)

This product is exclusively available under Proteintech Group brand and is not available to purchase from any other manufacturer.

## Selected Validation Data



Various lysates were subjected to SDS PAGE followed by western blot with 68488-1-Ig (PYCR2 antibody) at dilution of 1:10000 incubated at room temperature for 1.5 hours.



Various lysates were subjected to SDS PAGE followed by western blot with 68488-1-Ig (PYCR2 antibody) at dilution of 1:20000 incubated at room temperature for 1.5 hours. The membrane was stripped and reblotted with HRP-conjugated Alpha Tubulin Monoclonal antibody (HRP-66031) as loading control.