

For Research Use Only

DNMT1 Monoclonal antibody

Catalog Number: 68485-1-Ig **2 Publications**



Basic Information

Catalog Number: 68485-1-Ig	GenBank Accession Number: BC126227	Purification Method: Protein G purification
Concentration: 1000 µg/ml	GeneID (NCBI): 1786	CloneNo.: 2G5C5
Source: Mouse	UNIPROT ID: P26358	Recommended Dilutions: WB 1:2000-1:10000
Isotype: IgG1	Full Name: DNA (cytosine-5-)-methyltransferase 1	
Immunogen Catalog Number: AG19116	Calculated MW: 1632 aa, 185 kDa	
	Observed MW: 180-200 kDa	

Applications

Tested Applications: WB, ELISA	Positive Controls:
Cited Applications: WB, IF	WB : A549 cells, LNCaP cells, HeLa cells, HEK-293 cells, HepG2 cells, Jurkat cells, K-562 cells, HSC-T6 cells, NIH/3T3 cells
Species Specificity: Human, Mouse, Rat	
Cited Species: human, mouse	

Background Information

DNA methylation is a major epigenetic modification that regulates gene expression. DNMT1, the maintenance DNA methylation enzyme, is the primary enzyme responsible for copying methylation patterns after DNA replication. DNMT1 is required for X chromosome inactivation, imprinting, genomic methylation and proper embryonic development. Overexpression of DNMT1 has been reported in various cancers. DNMT1 exists some isoforms with MW 184 kDa and 145 kDa. (PMID: 10753866)

Notable Publications

Author	Pubmed ID	Journal	Application
Yajun Shi	40041941	Adv Sci (Weinh)	IF
Jianjun Wu	37972696	Gene	WB,IF

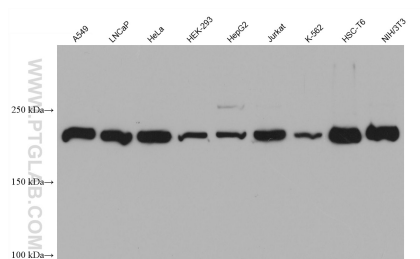
Storage

Storage:
Store at -20°C. Stable for one year after shipment.
Storage Buffer:
PBS with 0.02% sodium azide and 50% glycerol, pH7.3
Aliquoting is unnecessary for -20°C storage

For technical support and original validation data for this product please contact:
T: 4006900926 E: Proteintech-CN@ptglab.com W: ptgcn.com

This product is exclusively available under Proteintech Group brand and is not available to purchase from any other manufacturer.

Selected Validation Data



Various lysates were subjected to SDS PAGE followed by western blot with 68485-1-Ig (DNMT1 antibody) at dilution of 1:5000 incubated at room temperature for 1.5 hours.