

For Research Use Only

CRYBB2 Monoclonal antibody, PBS Only



Catalog Number: 68481-1-PBS

Basic Information

Catalog Number:

68481-1-PBS

Size:

1 mg/ml

Source:

Mouse

Isotype:

IgG1

Immunogen Catalog Number:

AG12916

GenBank Accession Number:

BC069535

GeneID (NCBI):

1415

UNIPROT ID:

P43320

Full Name:

crystallin, beta B2

Calculated MW:

205 aa, 23 kDa

Observed MW:

24 kDa

Purification Method:

Protein A purification

CloneNo.:

2E5E7

Applications

Tested Applications:

WB, Indirect ELISA

Species Specificity:

Human, rabbit, rat, mouse

Background Information

Storage

Storage:

Store at -80°C.

The product is shipped with ice packs. Upon receipt, store it immediately at -80°C

Storage Buffer:

PBS Only

For technical support and original validation data for this product please contact:

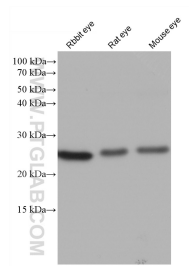
T: 4006900926

E: Proteintech-CN@ptglab.com

W: ptgcn.com

This product is exclusively available under Proteintech Group brand and is not available to purchase from any other manufacturer.

Selected Validation Data



Various lysates were subjected to SDS PAGE followed by western blot with 68481-1-Ig (CRYBB2 antibody) at dilution of 1:10000 incubated at room temperature for 1.5 hours. This data was developed using the same antibody clone with 68481-1-PBS in a different storage buffer formulation.