

For Research Use Only

CRYBB2 Monoclonal antibody

Catalog Number: 68481-1-Ig



Basic Information

Catalog Number:

68481-1-Ig

Size:

1000 µg/ml

Source:

Mouse

Isotype:

IgG1

Immunogen Catalog Number:

AG12916

GenBank Accession Number:

BC069535

GeneID (NCBI):

1415

UNIPROT ID:

P43320

Full Name:

crystallin, beta B2

Calculated MW:

205 aa, 23 kDa

Observed MW:

24 kDa

Purification Method:

Protein G purification

CloneNo.:

2E5E7

Recommended Dilutions:

WB 1:5000-1:50000

Applications

Tested Applications:

WB, ELISA

Species Specificity:

Human, rabbit, rat, mouse

Positive Controls:

WB : rabbit eye tissue, Rat eye tissue, Mouse eye tissue

Background Information

Storage

Storage:

Store at -20°C. Stable for one year after shipment.

Storage Buffer:

PBS with 0.02% sodium azide and 50% glycerol pH 7.3.

Aliquoting is unnecessary for -20°C storage

For technical support and original validation data for this product please contact:

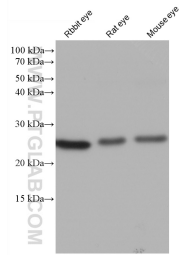
T: 4006900926

E: Proteintech-CN@ptglab.com

W: ptgcn.com

This product is exclusively available under Proteintech Group brand and is not available to purchase from any other manufacturer.

Selected Validation Data



Various lysates were subjected to SDS PAGE followed by western blot with 68481-1-Ig (CRYBB2 antibody) at dilution of 1:10000 incubated at room temperature for 1.5 hours.