

For Research Use Only

LMNB2 Monoclonal antibody, PBS Only (Capture)

Catalog Number: 68475-2-PBS



Basic Information

Catalog Number: 68475-2-PBS	GenBank Accession Number: BC006551	Purification Method: Protein G purification
Source: Mouse	GeneID (NCBI): 84823	CloneNo.: 2B6H1
Isotype: IgG1	UNIPROT ID: Q03252	
Immunogen Catalog Number: AG33296	Full Name: lamin B2	
	Calculated MW: 68 kDa	

Applications

Tested Applications:
Cytometric bead array, Indirect ELISA

Species Specificity:
human

Background Information

Storage

Storage:
Store at -80°C.
The product is shipped with ice packs. Upon receipt, store it immediately at -80°C

Storage Buffer:
PBS only, pH7.3

For technical support and original validation data for this product please contact:

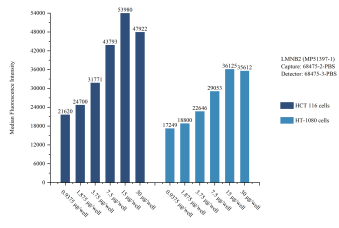
T: 4006900926

E: Proteintech-CN@ptglab.com

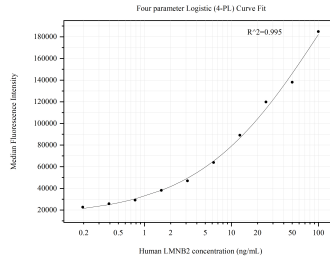
W: ptgcn.com

This product is exclusively available under Proteintech Group brand and is not available to purchase from any other manufacturer.

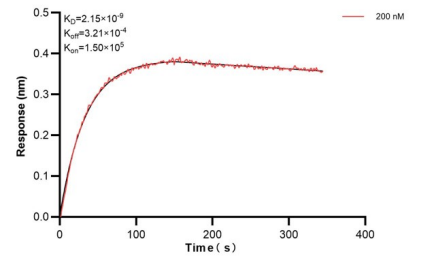
Selected Validation Data



Sample test of MP51397-1, LMNB2 Monoclonal Matched Antibody Pair, PBS Only. Capture antibody: 68475-2-PBS. Detection antibody: 68475-3-PBS.



Cytometric bead array standard curve of MP51397-1, LMNB2 Monoclonal Matched Antibody Pair, PBS Only. Capture antibody: 68475-2-PBS. Detection antibody: 68475-3-PBS. Standard: Ag33296. Range: 0.195-100 ng/mL



Bi-layer interferometry (BLI) kinetic assays of 68475-2-Ig against Human LMNB2 were performed. The affinity constant is 2.15 nM.