

For Research Use Only

MEN1 Monoclonal antibody

Catalog Number: 68473-1-Ig



Basic Information

Catalog Number: 68473-1-Ig	GenBank Accession Number: BC002544	Purification Method: Protein G purification
Size: 1000 µg/ml	GeneID (NCBI): 4221	CloneNo.: 3A6A11
Source: Mouse	UNIPROT ID: O00255	Recommended Dilutions: WB 1:5000-1:50000
Isotype: IgG1	Full Name: multiple endocrine neoplasia I	
Immunogen Catalog Number: AG7566	Calculated MW: 68 kDa	
	Observed MW: 68-70 kDa	

Applications

Tested Applications: WB, ELISA	Positive Controls: WB : HepG2 cells, HEK-293 cells, HeLa cells, U2OS cells, LNCaP cells, K-562 cells, Jurkat cells
Species Specificity: Human	

Background Information

MEN1, also named as Menin or MEI1, is a tumor suppressor protein encoded by the MEN1 gene. It is located in nucleus and ubiquitous expression in spleen and lymph node. The calculated molecular weight of MEN1 is 68 kDa. Its inactivation has been implicated in tumors of many endocrine tissues. Germline inactivating mutations of MEN1 gene are the main cause of multiple endocrine neoplasia type 1 (MEN1), a syndrome characterized by tumors in the pituitary gland, the parathyroid glands, and the enteropancreatic neuroendocrine tissues. Recent study shows astroglia menin deficiency leads to depressive-like behaviors in mice.

Storage

Storage:
Store at -20°C. Stable for one year after shipment.
Storage Buffer:
PBS with 0.02% sodium azide and 50% glycerol pH 7.3.
Aliquoting is unnecessary for -20°C storage

For technical support and original validation data for this product please contact:

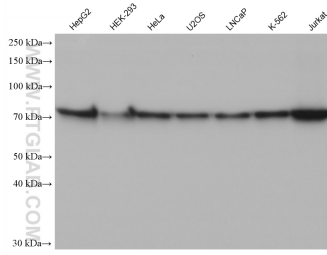
T: 4006900926

E: Proteintech-CN@ptglab.com

W: ptgcn.com

This product is exclusively available under Proteintech Group brand and is not available to purchase from any other manufacturer.

Selected Validation Data



Various lysates were subjected to SDS PAGE followed by western blot with 68473-1-Ig (MEN1 antibody) at dilution of 1:20000 incubated at room temperature for 1.5 hours.