

For Research Use Only

IGF2BP3 Monoclonal antibody, PBS Only



Catalog Number: 68470-1-PBS

Basic Information

Catalog Number: 68470-1-PBS	GenBank Accession Number: BC065269	Purification Method: Protein A purification
Size: 1 mg/ml	GeneID (NCBI): 10643	CloneNo.: 1G6A7
Source: Mouse	UNIPROT ID: O00425	
Isotype: IgG1	Full Name: insulin-like growth factor 2 mRNA binding protein 3	
Immunogen Catalog Number: AG6349	Calculated MW: 64 kDa	
	Observed MW: 64 kDa	

Applications

Tested Applications:
WB, ELISA

Species Specificity:
Human, mouse, rat

Background Information

IGF2BP3, also named as IMP3, KOC1 and VICKZ3, belongs to the RRM IMP/VICKZ family. It is one of the RNA binding proteins involved in mRNA localization and translational control. IGF2BP3 is expressed during embryogenesis, as well as in some malignant tumors. It can be used as an independent prognostic factor for osteosarcoma.

Storage

Storage:
Store at -80°C.
The product is shipped with ice packs. Upon receipt, store it immediately at -80°C

Storage Buffer:
PBS only

For technical support and original validation data for this product please contact:

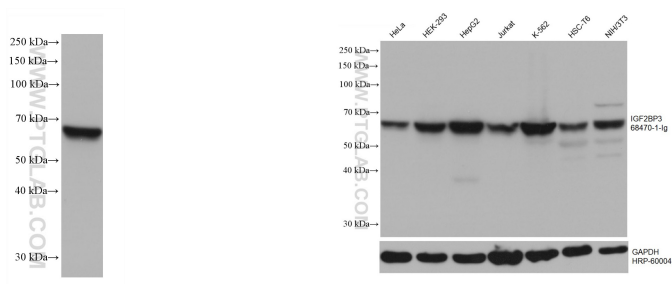
T: 4006900926

E: Proteintech-CN@ptglab.com

W: ptgcn.com

This product is exclusively available under Proteintech Group brand and is not available to purchase from any other manufacturer.

Selected Validation Data



A549 cells were subjected to SDS PAGE followed by western blot with 68470-1-Ig (IGF2BP3 antibody) at dilution of 1:20000 incubated at room temperature for 1.5 hours. This data was developed using the same antibody clone with 68470-1-PBS in a different storage buffer formulation.

Various lysates were subjected to SDS PAGE followed by western blot with 68470-1-Ig (IGF2BP3 antibody) at dilution of 1:20000 incubated at room temperature for 1.5 hours. The membrane was stripped and reblotted with HRP-conjugated GAPDH Monoclonal antibody (HRP-60004) as loading control. This data was developed using the same antibody clone with 68470-1-PBS in a different storage buffer formulation.