

For Research Use Only

IGF2BP3 Monoclonal antibody

Catalog Number: 68470-1-Ig



Basic Information

Catalog Number:

68470-1-Ig

Size:

1000 ug/ml

Source:

Mouse

Isotype:

IgG1

Immunogen Catalog Number:

AG6349

GenBank Accession Number:

BC065269

GeneID (NCBI):

10643

UNIPROT ID:

O00425

Full Name:

insulin-like growth factor 2 mRNA

binding protein 3

Calculated MW:

64 kDa

Observed MW:

64 kDa

Purification Method:

Protein A purification

CloneNo.:

1G6A7

Recommended Dilutions:

WB 1:5000-1:50000

Applications

Tested Applications:

WB, ELISA

Species Specificity:

human, mouse, rat

Positive Controls:

WB : HeLa cells, A549 cells, HEK-293 cells, HepG2 cells, Jurkat cells, K-562 cells, HSC-T6 cells, NIH/3T3 cells

Background Information

IGF2BP3, also named as IMP3, KOC1 and VICKZ3, belongs to the RRM1IMP/VICKZ family. It is one of the RNA binding proteins involved in mRNA localization and translational control. IGF2BP3 is expressed during embryogenesis, as well as in some malignant tumors. It can be used as an independent prognostic factor for osteosarcoma.

Storage

Storage:

Store at -20°C. Stable for one year after shipment.

Storage Buffer:

PBS with 0.02% sodium azide and 50% glycerol pH 7.3.

Aliquoting is unnecessary for -20°C storage

For technical support and original validation data for this product please contact:

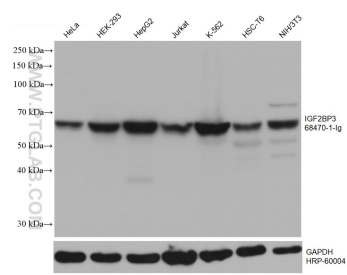
T: 4006900926

E: Proteintech-CN@ptglab.com

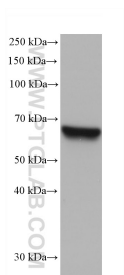
W: ptgcn.com

This product is exclusively available under Proteintech Group brand and is not available to purchase from any other manufacturer.

Selected Validation Data



Various lysates were subjected to SDS PAGE followed by western blot with 68470-1-Ig (IGF2BP3 antibody) at dilution of 1:20000 incubated at room temperature for 1.5 hours. The membrane was stripped and reblotted with HRP-conjugated GAPDH Monoclonal antibody (HRP-60004) as loading control.



A549 cells were subjected to SDS PAGE followed by western blot with 68470-1-Ig (IGF2BP3 antibody) at dilution of 1:20000 incubated at room temperature for 1.5 hours.