

For Research Use Only

MIRO2 Monoclonal antibody

Catalog Number: 68469-1-Ig



Basic Information

Catalog Number:

68469-1-Ig

Concentration:

1000 ug/ml

Source:

Mouse

Isotype:

IgG1

Immunogen Catalog Number:

AG29690

GenBank Accession Number:

BC014942

GeneID (NCBI):

89941

UNIPROT ID:

Q8IXI1

Full Name:

ras homolog gene family, member T2

Calculated MW:

68 kDa

Observed MW:

68 kDa

Purification Method:

Protein G purification

CloneNo.:

1A3C2

Recommended Dilutions:

WB 1:5000-1:50000

Applications

Tested Applications:

WB, ELISA

Species Specificity:

human

Positive Controls:

WB : U2OS cells, A549 cells, LNCaP cells, HeLa cells, HEK-293 cells, HepG2 cells, Jurkat cells, K-562 cells, HL-60 cells, THP-1 cells

Background Information

RHOT2 (Mitochondrial Rho GTPase 2) is also named as MIRO-2, hMiro-2, ARHT2, C16orf39 and Ras homolog gene family member T2. RHOT2 belongs to the mitochondrial Rho GTPase family. RHOT2 gene encodes a member of Rho family of GTPase, which are localized to the outer membrane of mitochondria (PMID: 22078885).

Storage

Storage:

Store at -20°C. Stable for one year after shipment.

Storage Buffer:

PBS with 0.02% sodium azide and 50% glycerol, pH7.3

Aliquoting is unnecessary for -20°C storage

For technical support and original validation data for this product please contact:

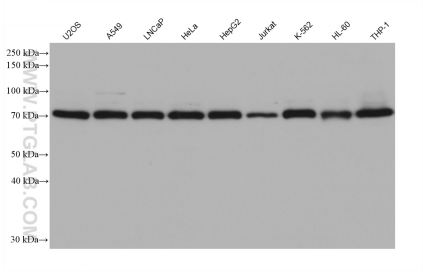
T: 4006900926

E: Proteintech-CN@ptglab.com

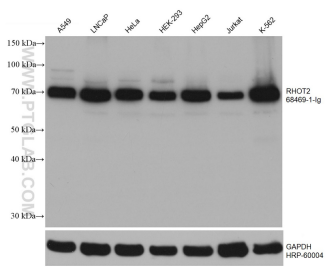
W: ptgcn.com

This product is exclusively available under Proteintech Group brand and is not available to purchase from any other manufacturer.

Selected Validation Data



Various lysates were subjected to SDS PAGE followed by western blot with 68469-1-Ig (RHO2 antibody) at dilution of 1:20000 incubated at room temperature for 1.5 hours.



Various lysates were subjected to SDS PAGE followed by western blot with 68469-1-Ig (RHO2 antibody) at dilution of 1:10000 incubated at room temperature for 1.5 hours. The membrane was stripped and reblotted with HRP-conjugated GAPDH Monoclonal antibody (HRP-60004) as loading control.