

PPA2 Monoclonal antibody, PBS Only

Catalog Number: 68468-1-PBS

Basic Information

Catalog Number:

68468-1-PBS

Size:

1 mg/ml

Source:

Mouse

Isotype:

IgG1

Immunogen Catalog Number:

AG10125

GenBank Accession Number:

BC057219

GeneID (NCBI):

27068

UNIPROT ID:

Q9H2U2

Full Name:

pyrophosphatase (inorganic) 2

Calculated MW:

305aa, 35 kDa; 334aa, 38 kDa

Observed MW:

34 kDa

Purification Method:

Protein G purification

CloneNo.:

1C2E3

Applications

Tested Applications:

WB, Indirect ELISA

Species Specificity:

Human, mouse, rat

Background Information

Pyrophosphatase 2 (PPA2) is a mitochondrial-located pyrophosphatase (PPase) that hydrolyzes inorganic pyrophosphate (PPi), generated by numerous nucleotide-dependent reactions, into two orthophosphate molecules (PMID: 34400813). PPA2 is a cardiomyopathy-associated protein, which has a greater physiological importance in mitochondrial function (PMID: 27523597).

Storage

Storage:

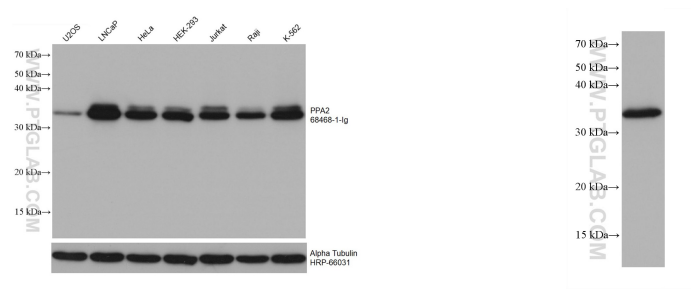
Store at -80°C.

The product is shipped with ice packs. Upon receipt, store it immediately at -80°C

Storage Buffer:

PBS Only

Selected Validation Data



Various lysates were subjected to SDS PAGE followed by western blot with 68468-1-Ig (PPA2 antibody) at dilution of 1:20000 incubated at room temperature for 1.5 hours. The membrane was stripped and reblotted with HRP-conjugated Alpha Tubulin Monoclonal antibody (HRP-66031) as loading control. This data was developed using the same antibody clone with 68468-1-PBS in a different storage buffer formulation.

4T1 cells were subjected to SDS PAGE followed by western blot with 68468-1-Ig (PPA2 antibody) at dilution of 1:20000 incubated at room temperature for 1.5 hours. This data was developed using the same antibody clone with 68468-1-PBS in a different storage buffer formulation.