

For Research Use Only

PPA2 Monoclonal antibody

Catalog Number: 68468-1-Ig



Basic Information

| | | |
|---|---|---|
| Catalog Number: 68468-1-Ig | GenBank Accession Number: BC057219 | Purification Method: Protein G purification |
| Size: 1000 µg/ml | GeneID (NCBI): 27068 | CloneNo.: 1C2E3 |
| Source: Mouse | UNIPROT ID: Q9H2U2 | Recommended Dilutions: WB 1:5000-1:50000 |
| Isotype: IgG1 | Full Name: pyrophosphatase (inorganic) 2 | |
| Immunogen Catalog Number: AG10125 | Calculated MW: 305aa,35 kDa; 334aa,38 kDa | |
| | Observed MW: 34 kDa | |

Applications

| | |
|--|---|
| Tested Applications: WB, ELISA | Positive Controls: WB : U2OS cells, 4T1 cells, LNCaP cells, HeLa cells, HEK-293T cells, Jurkat cells, Raji cells, K-562 cells |
| Species Specificity: Human, mouse, rat | |

Background Information

Pyrophosphatase 2 (PPA2) is a mitochondrial-located pyrophosphatase (PPase) that hydrolyzes inorganic pyrophosphate (PPi), generated by numerous nucleotide-dependent reactions, into two orthophosphate molecules (PMID: 34400813). PPA2 is a cardiomyopathy-associated protein, which has a greater physiological importance in mitochondrial function (PMID: 27523597).

Storage

Storage:
Store at -20°C. Stable for one year after shipment.
Storage Buffer:
PBS with 0.02% sodium azide and 50% glycerol pH 7.3.
Aliquoting is unnecessary for -20°C storage

For technical support and original validation data for this product please contact:

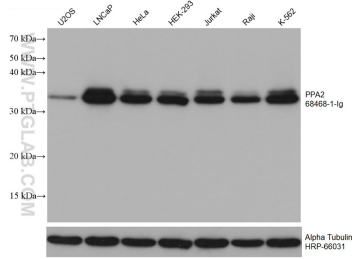
T: 4006900926

E: Proteintech-CN@ptglab.com

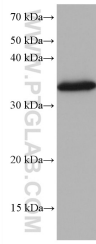
W: ptgcn.com

This product is exclusively available under Proteintech Group brand and is not available to purchase from any other manufacturer.

Selected Validation Data



Various lysates were subjected to SDS PAGE followed by western blot with 68468-1-Ig (PPA2 antibody) at dilution of 1:20000 incubated at room temperature for 1.5 hours. The membrane was stripped and reblotted with HRP-conjugated Alpha Tubulin Monoclonal antibody (HRP-66031) as loading control.



4T1 cells were subjected to SDS PAGE followed by western blot with 68468-1-Ig (PPA2 antibody) at dilution of 1:20000 incubated at room temperature for 1.5 hours.