

For Research Use Only

MRPL28 Monoclonal antibody, PBS Only

Catalog Number: 68467-1-PBS



Basic Information

Catalog Number:

68467-1-PBS

Concentration:

1mg/ml

Source:

Mouse

Isotype:

IgG1

Immunogen Catalog Number:

AG33198

GenBank Accession Number:

BC000990

GeneID (NCBI):

10573

UNIPROT ID:

Q13084

Full Name:

mitochondrial ribosomal protein L28

Calculated MW:

30 kDa

Observed MW:

30 kDa

Purification Method:

Protein G purification

CloneNo.:

2E6B2

Applications

Tested Applications:

WB, IF/ICC, Indirect ELISA

Species Specificity:

human, mouse, rat

Background Information

Storage

Storage:

Store at -80°C.

The product is shipped with ice packs. Upon receipt, store it immediately at -80°C

Storage Buffer:

PBS only, pH7.3

For technical support and original validation data for this product please contact:

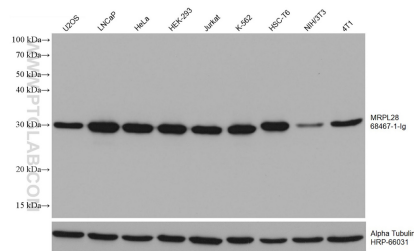
T: 4006900926

E: Proteintech-CN@ptglab.com

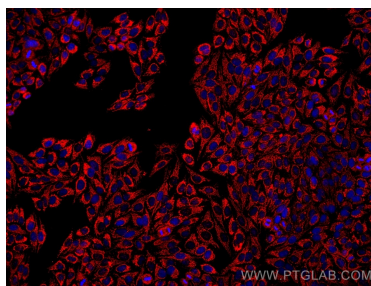
W: ptgcn.com

This product is exclusively available under Proteintech Group brand and is not available to purchase from any other manufacturer.

Selected Validation Data



Various lysates were subjected to SDS PAGE followed by western blot with 68467-1-Ig (MRPL28 antibody) at dilution of 1:10000 incubated at room temperature for 1.5 hours. The membrane was stripped and reblotted with HRP-conjugated Alpha Tubulin Monoclonal antibody (HRP-66031) as loading control. This data was developed using the same antibody clone with 68467-1-PBS in a different storage buffer formulation.



Immunofluorescent analysis of (4% PFA) fixed HepG2 cells using MRPL28 antibody (68467-1-Ig, Clone: 2E6B2) at dilution of 1:1000 and Multi-rAb CoraLite® Plus 594-Goat Anti-Mouse Recombinant Secondary Antibody (H+L) (Cat.NO. RGAM004). This data was developed using the same antibody clone with 68467-1-PBS in a different storage buffer formulation.