

For Research Use Only

SQRDL Monoclonal antibody

Catalog Number: 68459-1-Ig

Featured Product



Basic Information

Catalog Number:

68459-1-Ig

Size:

1000 ug/ml

Source:

Mouse

Isotype:

IgG2b

Immunogen Catalog Number:

AG10762

GenBank Accession Number:

BC016836

GeneID (NCBI):

58472

UNIPROT ID:

Q9Y6N5

Full Name:

sulfide quinone reductase-like (yeast)

Calculated MW:

450 aa, 50 kDa

Observed MW:

50 kDa

Purification Method:

Protein A purification

CloneNo.:

1B4E3

Recommended Dilutions:

WB 1:5000-1:20000

IP 0.5-4.0 ug for 1.0-3.0 mg of total

protein lysate

IHC 1:2000-1:8000

IF/ICC 1:200-1:800

Applications

Tested Applications:

WB, IHC, IF/ICC, IP, ELISA

Species Specificity:

human, pig

Note-IHC: suggested antigen retrieval with TE buffer pH 9.0; (*) Alternatively, antigen retrieval may be performed with citrate buffer pH 6.0

Positive Controls:

WB: A549 cells, HeLa cells, HepG2 cells, HT-29 cells, hTERT-RPE1 cells, THP-1 cells, pig liver tissue

IP: HeLa cells,

IHC: human skin cancer tissue,

IF/ICC: HepG2 cells,

Background Information

SQRDL(Sulfide:quinone oxidoreductase, mitochondrial) catalyzes the oxidation of hydrogen sulfide, with the help of a quinone. Although the SQRDL precursor protein displays a molecular weight of 50 kDa, a prominent band at about 46 kDa is detected by western blot. This discrepancy reflects the cleavage of an N-terminal targeting sequence of 4 kDa during the import of the protein into the mitochondria(PMID:22067608). SQRDL is one of the enzymes involved in H₂S signaling in a discrete population of neurons, oligodendrocytes, and endothelial cells.

Storage

Storage:

Store at -20°C. Stable for one year after shipment.

Storage Buffer:

PBS with 0.02% sodium azide and 50% glycerol pH 7.3.

Aliquoting is unnecessary for -20°C storage

For technical support and original validation data for this product please contact:

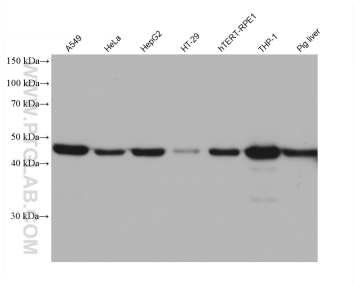
T: 4006900926

E: Proteintech-CN@ptglab.com

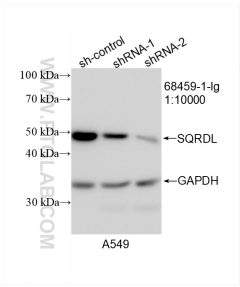
W: ptgcn.com

This product is exclusively available under Proteintech Group brand and is not available to purchase from any other manufacturer.

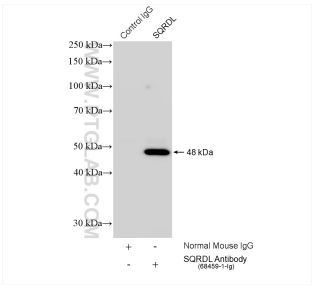
Selected Validation Data



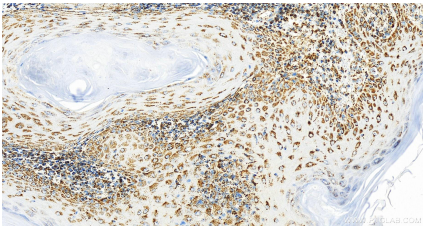
Various lysates were subjected to SDS PAGE followed by western blot with 68459-1-Ig (SQRDL antibody) at dilution of 1:20000 incubated at room temperature for 1.5 hours.



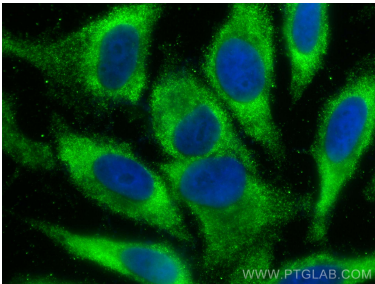
WB result of SQRDL antibody (68459-1-Ig; 1:10000; incubated at room temperature for 1.5 hours) with sh-Control and sh-SQRDL transfected A549 cells.



IP result of anti-SQRDL (IP:68459-1-Ig, 4ug; Detection:68459-1-Ig 1:3000) with HeLa cells lysate 1560 ug.



Immunohistochemical analysis of paraffin-embedded skin cancer slide using 68459-1-Ig (SQRDL antibody) at dilution of 1:4000 (under 20x lens). Heat mediated antigen retrieval with Tris-EDTA buffer (pH 9.0).



Immunofluorescent analysis of (-20°C Ethanol) fixed HepG2 cells using SQRDL antibody (68459-1-Ig, Clone: 1B4E3) at dilution of 1:400 and CoraLite®488-Conjugated AffiniPure Goat Anti-Mouse IgG(H+L) (SA00013-1).