

For Research Use Only

DDX43 Monoclonal antibody

Catalog Number: 68454-1-Ig



Basic Information

Catalog Number:

68454-1-Ig

Size:

1000 µg/ml

Source:

Mouse

Isotype:

IgG1

Immunogen Catalog Number:

AG11484

GenBank Accession Number:

BC066938

GeneID (NCBI):

55510

UNIPROT ID:

Q9NXZ2

Full Name:

DEAD (Asp-Glu-Ala-Asp) box polypeptide 43

Calculated MW:

648 aa, 73 kDa

Observed MW:

68-73 kDa

Purification Method:

Protein G purification

CloneNo.:

1B3B2

Recommended Dilutions:

WB 1:1000-1:6000

Applications

Tested Applications:

WB, ELISA

Species Specificity:

Human, Rat, Rabbit

Positive Controls:

WB : Calu-3 cells, LNCaP cells, HeLa cells, U2OS cells, DU 145 cells, NCCIT cells, rabbit testis tissue, rat testis tissue

Background Information

DDX43 (DEAD-box helicase 43), also known as HAGE (helicase antigen gene), is a member of the DEAD-box protein family. DDX43 is highly expressed in many tumors and is, therefore, considered a potential target for immunotherapy.

Storage

Storage:

Store at -20°C. Stable for one year after shipment.

Storage Buffer:

PBS with 0.02% sodium azide and 50% glycerol pH 7.3.

Aliquoting is unnecessary for -20°C storage

For technical support and original validation data for this product please contact:

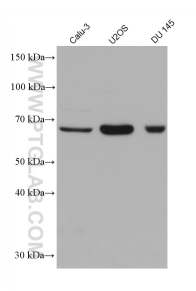
T: 4006900926

E: Proteintech-CN@ptglab.com

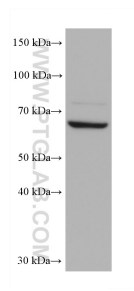
W: ptgcn.com

This product is exclusively available under Proteintech Group brand and is not available to purchase from any other manufacturer.

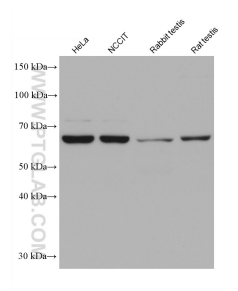
Selected Validation Data



Various lysates were subjected to SDS PAGE followed by western blot with 68454-1-Ig (DDX43 antibody) at dilution of 1:3000 incubated at room temperature for 1.5 hours.



LNCaP cells were subjected to SDS PAGE followed by western blot with 68454-1-Ig (DDX43 antibody) at dilution of 1:3000 incubated at room temperature for 1.5 hours.



Various lysates were subjected to SDS PAGE followed by western blot with 68454-1-Ig (DDX43 antibody) at dilution of 1:3000 incubated at room temperature for 1.5 hours.