

# HNRNPC Monoclonal antibody, PBS Only

Catalog Number: 68447-1-PBS

## Basic Information

**Catalog Number:**

68447-1-PBS

**Size:**

1 mg/ml

**Source:**

Mouse

**Isotype:**

IgG1

**Immunogen Catalog Number:**

AG2356

**GenBank Accession Number:**

BC003394

**GeneID (NCBI):**

3183

**UNIPROT ID:**

P07910

**Full Name:**

heterogeneous nuclear  
ribonucleoprotein C (C1/C2)

**Calculated MW:**

32 kDa

**Observed MW:**

36-40 kDa

**Purification Method:**

Protein G purification

**CloneNo.:**

2G8G4

## Applications

**Tested Applications:**

WB, IP, Indirect ELISA, IF

**Species Specificity:**

Human, mouse, rat

## Background Information

HNRNPC, also named as Heterogeneous nuclear ribonucleoproteins C1/C2, is a 306 amino acid protein, which contains 1 RRM (RNA recognition motif) domain and belongs to the RRM HNRNPC family. HNRNPC localizes in the nucleus. It binds pre-mRNA and nucleates the assembly of 40S hnRNP particles. HNRNPC may play a role in the early steps of spliceosome assembly and pre-mRNA splicing. HNRNPC can act as a tetramer and is involved in the assembly of 40S hnRNP particles and plays a role with CSDE1 in internal initiation of translation during mitosis.

## Storage

**Storage:**

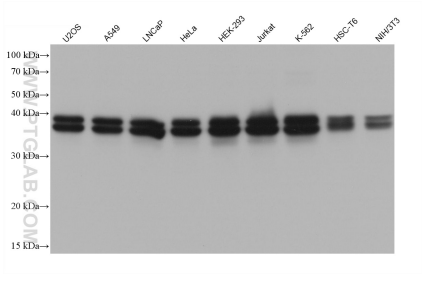
Store at -80°C.

**The product is shipped with ice packs. Upon receipt, store it immediately at -80°C**

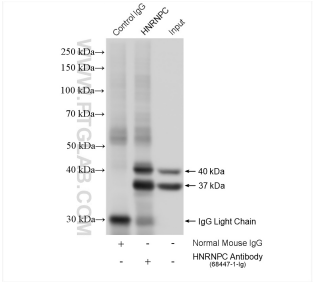
**Storage Buffer:**

PBS Only

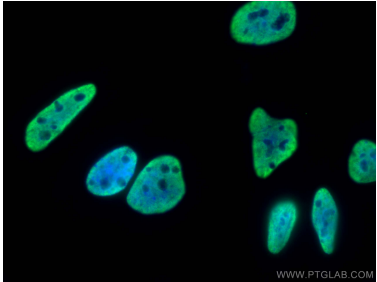
Selected Validation Data



Various lysates were subjected to SDS PAGE followed by western blot with 68447-1-Ig (HNRNPC antibody) at dilution of 1:20000 incubated at room temperature for 1.5 hours. This data was developed using the same antibody clone with 68447-1-PBS in a different storage buffer formulation.



IP result of anti-HNRNPC (IP:68447-1-Ig, 4ug; Detection:68447-1-Ig 1:4000) with HeLa cells lysate 1560 ug. This data was developed using the same antibody clone with 68447-1-PBS in a different storage buffer formulation.



Immunofluorescent analysis of (4% PFA) fixed HeLa cells using HNRNPC antibody (68447-1-Ig, Clone: 2G8G4) at dilution of 1:400 and CoraLite®488-Conjugated AffiniPure Goat Anti-Mouse IgG(H+L). This data was developed using the same antibody clone with 68447-1-PBS in a different storage buffer formulation.