

FBP1 Monoclonal antibody

Catalog Number: 68446-1-Ig

Basic Information

Catalog Number: 68446-1-Ig	GenBank Accession Number: BC012927	Purification Method: Protein A purification
Size: 1000 µg/ml	GeneID (NCBI): 2203	CloneNo.: 2G4E4
Source: Mouse	UNIPROT ID: P09467	Recommended Dilutions: WB 1:5000-1:40000 IHC 1:1000-1:4000 IF/ICC 1:400-1:1600
Isotype: IgG2a	Full Name: fructose-1,6-bisphosphatase 1	
Immunogen Catalog Number: AG3837	Calculated MW: 338 aa, 37 kDa Observed MW: 37-40 kDa	

Applications

Tested Applications: WB, IF/ICC, IHC, ELISA	Positive Controls:
Species Specificity: Human, Mouse, Rat, Pig	WB : mouse liver tissue, MCF-7 cells, T-47D cells, pig liver tissue, rat liver tissue
Note-IHC: suggested antigen retrieval with TE buffer pH 9.0; (*) Alternatively, antigen retrieval may be performed with citrate buffer pH 6.0	IHC : mouse kidney tissue,
	IF/ICC : MCF-7 cells,

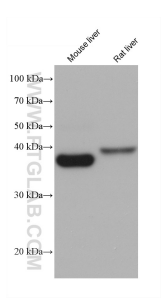
Background Information

FBP1 (Fructose-1,6-bisphosphatase 1) is also named as FBP and belongs to the FBPase class 1 family. It catalyzes the hydrolysis of fructose-1,6 bisphosphate to fructose-6-phosphate and inorganic phosphate. This reaction is an important regulatory site of gluconeogenesis. Defects in FBP1 are the cause of fructose-1,6-bisphosphatase deficiency (FBPD) (PMID:12126934).

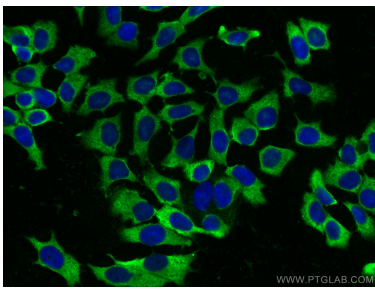
Storage

Storage:
Store at -20°C. Stable for one year after shipment.
Storage Buffer:
PBS with 0.02% sodium azide and 50% glycerol pH 7.3.
Aliquoting is unnecessary for -20°C storage

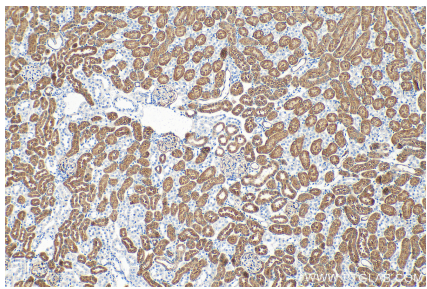
Selected Validation Data



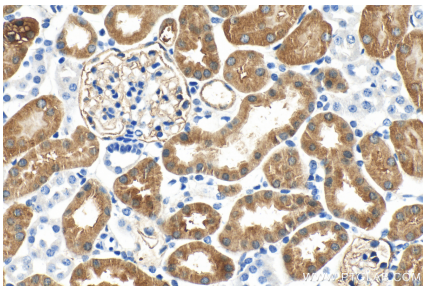
Various lysates were subjected to SDS PAGE followed by western blot with 68446-1-Ig (FBP1 antibody) at dilution of 1:20000 incubated at room temperature for 1.5 hours.



Immunofluorescent analysis of (-20°C Methanol) fixed MCF-7 cells using FBP1 antibody (68446-1-Ig, Clone: 2G4E4) at dilution of 1:800 and CoraLite®488-Conjugated AffiniPure Goat Anti-Mouse IgG(H+L).



Immunohistochemical analysis of paraffin-embedded mouse kidney tissue slide using 68446-1-Ig (FBP1 antibody) at dilution of 1:2000 (under 10x lens). Heat mediated antigen retrieval with Tris-EDTA buffer (pH 9.0).



Immunohistochemical analysis of paraffin-embedded mouse kidney tissue slide using 68446-1-Ig (FBP1 antibody) at dilution of 1:2000 (under 40x lens). Heat mediated antigen retrieval with Tris-EDTA buffer (pH 9.0).